

Instructions for downloading SAS and SPSS installation files

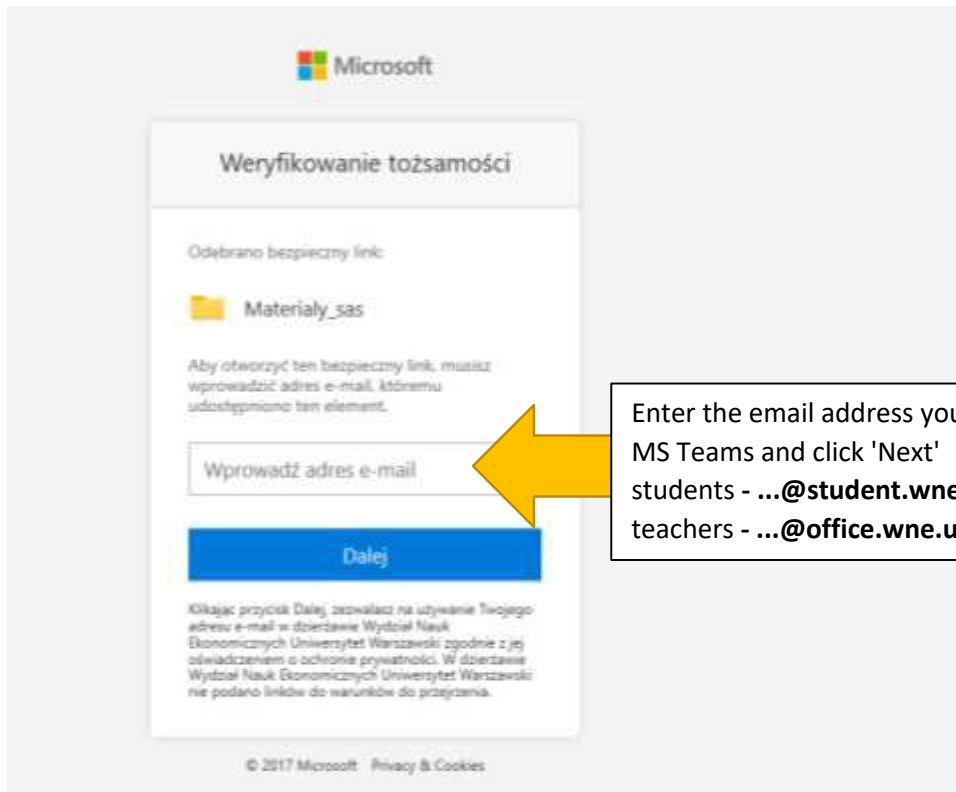
NOTE: SAS installation requires a minimum of 90 GB

In order to download the installation files for the SAS or SPSS software of your choice, you should receive an email from licencje@wne.uw.edu.pl with the appropriate link, license file, and password for the secure .zip files.

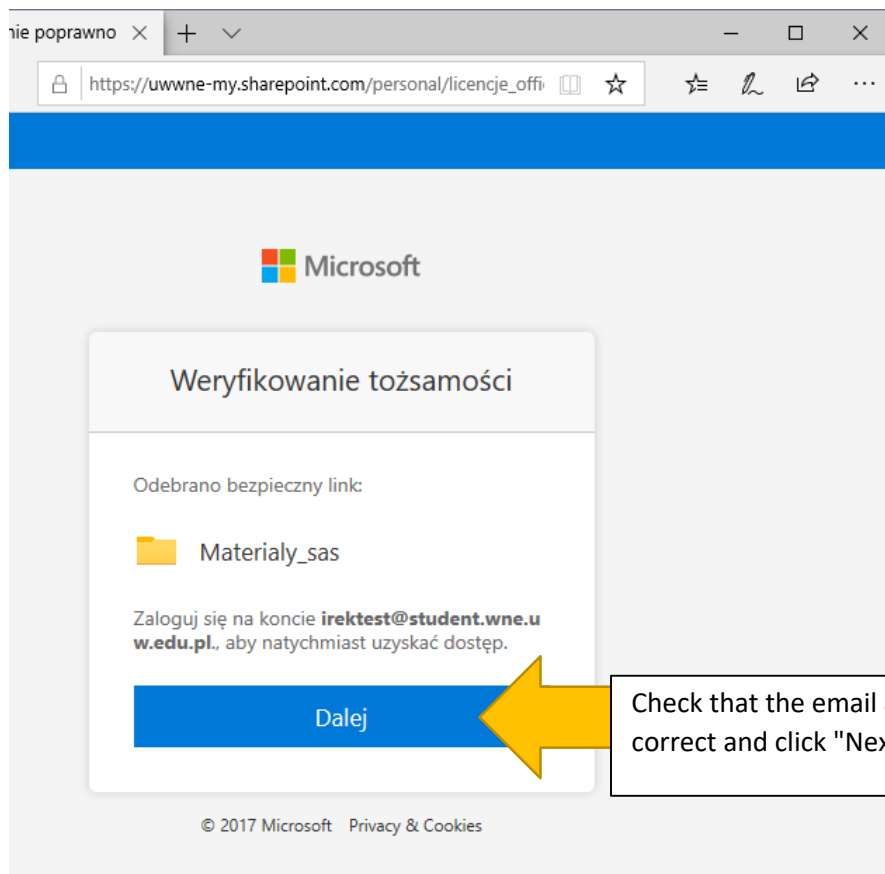
The above information is generated on the basis of a completed SPSS or SAS license form, available on the website (which you should fill out and send to licencje@wne.uw.edu.pl). Information will be sent to the email address provided in the license form.

After opening the link received from licencje@wne.uw.edu.pl, you should see the verification window below.

Enter your **MS Teams** credentials.



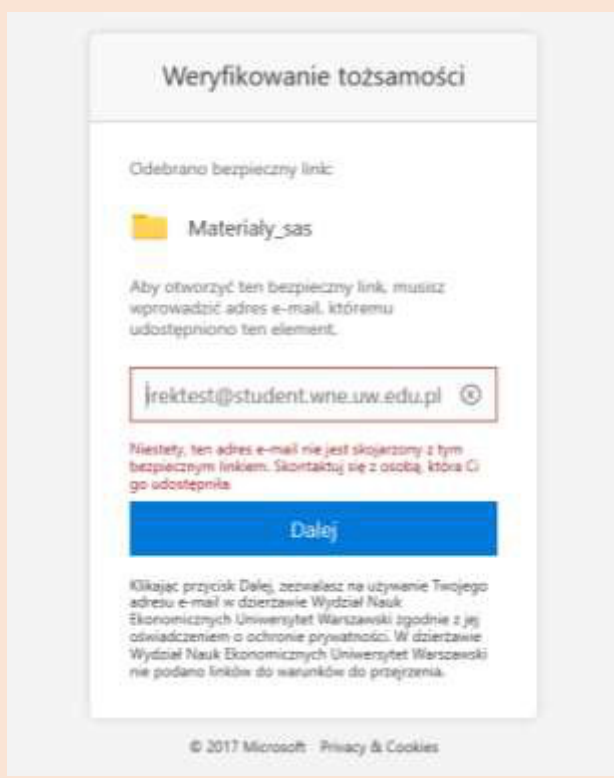
Enter the email address you used when logging into MS Teams and click 'Next'
students - ...@student.wne.uw.edu.pl
teachers - ...@office.wne.uw.edu.pl



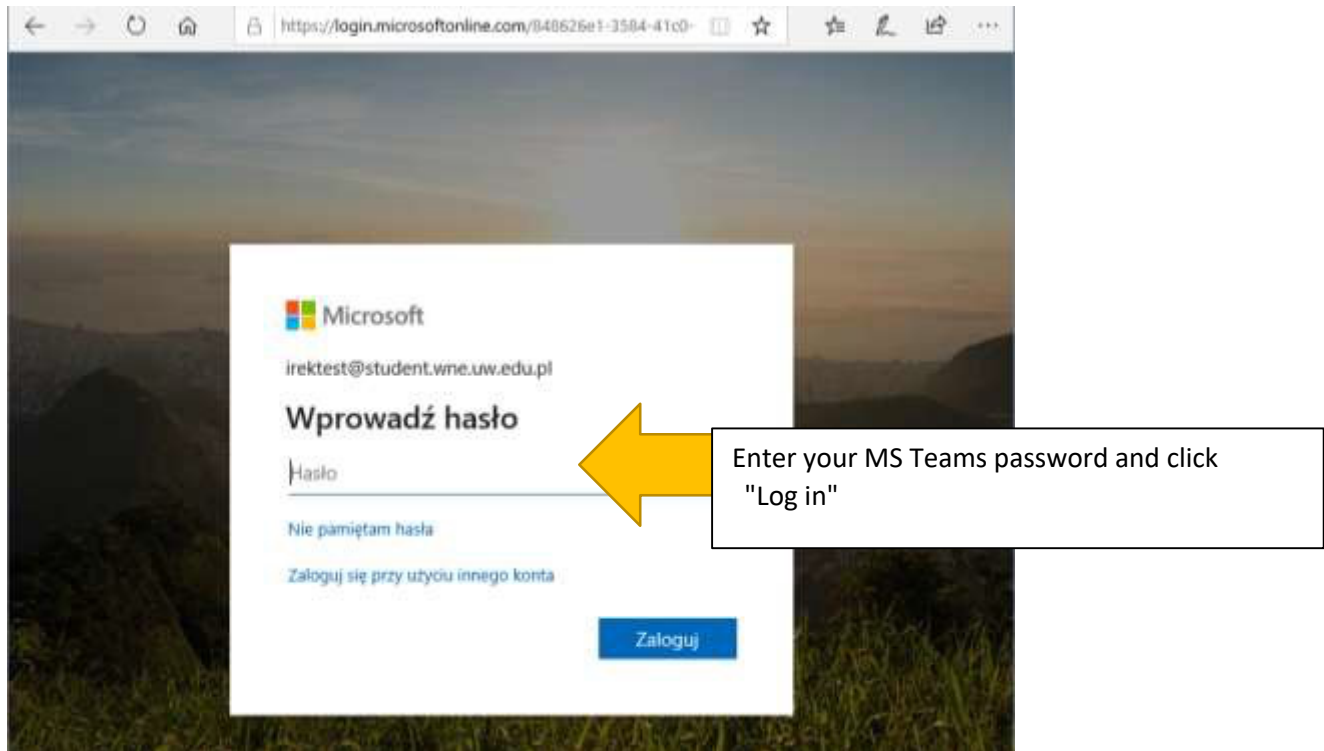
NOTE

If the data you have entered is incorrect or you do not have access to download the software installation files, you will see the following screen. In case of this issue or other problems, please contact **licencje@wne.uw.edu.pl**

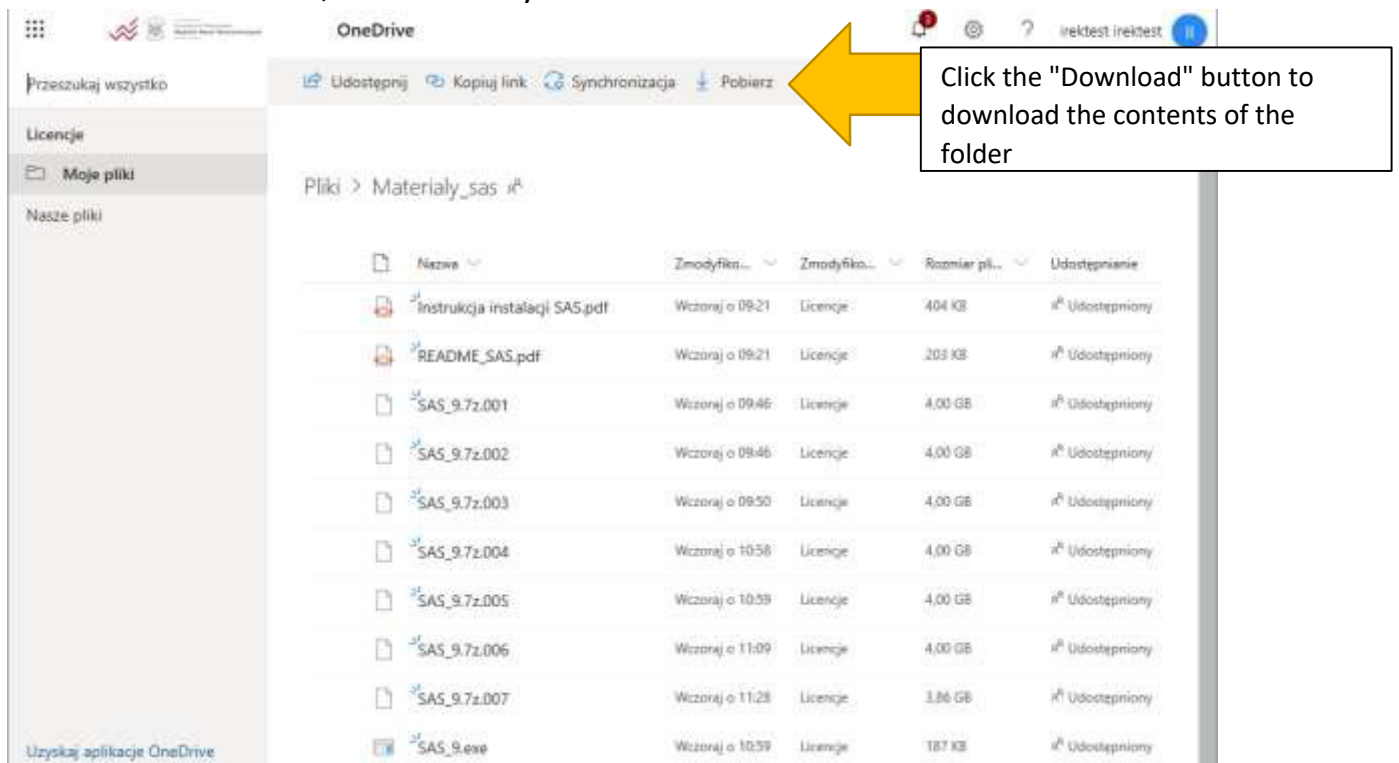
"Sorry, this email address isn't associated with this secure link. Please contact the person who shared it with you."



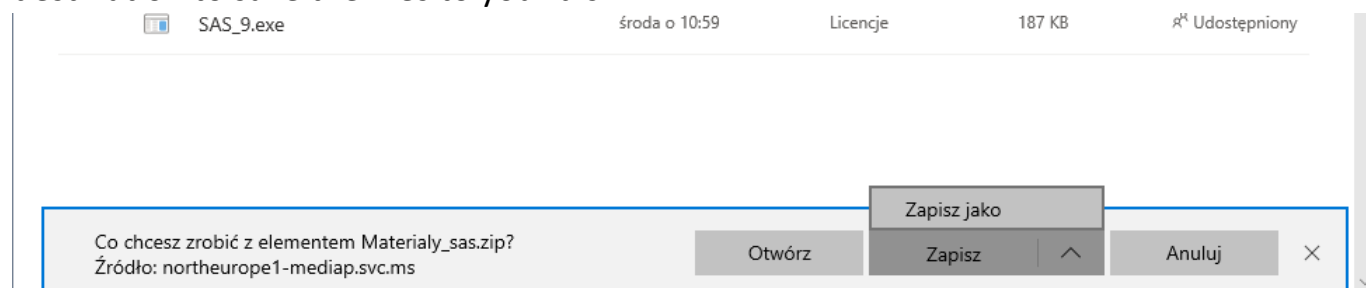
If all of the information is correct, you will be **directed automatically** to a form where you can enter your **password for MS Teams**.



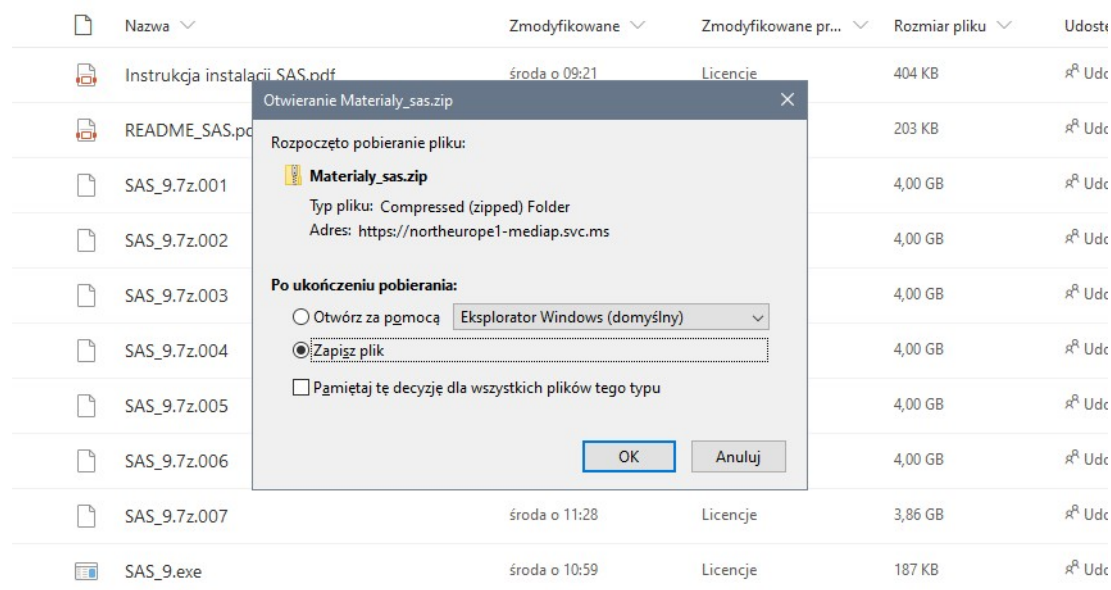
After entering the correct password, you will be transferred automatically to the OneDrive online disk, from which you will be able to download the software.



Then, depending on the browser you are using, select "Save As" and choose the destination to save the files to your disk.



MS Edge



Mozilla Firefox, Chrome

NOTE

The SAS installation requires a minimum of 90 GB of free disk space.

30GB for .zip files, 30GB to unpack files, and 30GB for the target installation.

To extract all of the files, click on SAS_9.exe and enter the password you received in the email, and when all of the files are unzipped, you can proceed to the installation process according to the instructions located where the installation files are saved:

Installation instructions SAS.pdf

In case of issues, please contact licencje@wne.uw.edu.pl