



UNIVERSITY
OF WARSAW



FACULTY OF
ECONOMIC SCIENCES

WORKING PAPERS

No. 14/2024 (450)

CONSTRUCTION AND HEDGING OF EQUITY INDEX OPTIONS PORTFOLIOS

MACIEJ WYSOCKI
ROBERT ŚLEPACZUK

WARSAW 2024

ISSN 2957-0506



Construction and Hedging of Equity Index Options Portfolios

Maciej Wysocki^a, Robert Ślepaczuk^{b*}

^a University of Warsaw, Faculty of Economic Sciences, Quantitative Finance Research Group, Department of Quantitative Finance and Machine Learning

^b University of Warsaw, Faculty of Economic Sciences, Quantitative Finance Research Group, Department of Quantitative Finance and Machine Learning

* Corresponding author: m.wysocki9@uw.edu.pl

Abstract: This research presents a comprehensive evaluation of systematic index option-writing strategies, focusing on S&P500 index options. We compare the performance of hedging strategies using the Black-Scholes-Merton (BSM) model and the Variance-Gamma (VG) model, emphasizing varying moneyness levels and different sizing methods based on delta and the VIX Index. The study employs 1-minute data of S&P500 index options and index quotes spanning from 2018 to 2023. The analysis benchmarks hedged strategies against buy-and-hold and naked option-writing strategies, with a focus on risk-adjusted performance metrics including transaction costs. Portfolio delta approximations are derived using implied volatility for the BSM model and market-calibrated parameters for the VG model. Key findings reveal that systematic option-writing strategies can potentially yield superior returns compared to buy-and-hold benchmarks. The BSM model generally provided better hedging outcomes than the VG model, although the VG model showed profitability in certain naked strategies as a tool for position sizing. In terms of rehedging frequency, we found that intraday hedging in 130-minute intervals provided both reliable protection against adverse market movements and a satisfactory returns profile.

Keywords: S&P500 Index options, Option Pricing Models, Black-Scholes-Merton model, Variance-Gamma model, Implied Volatility, Volatility Risk Premium, Volatility Spreads, Dynamic Hedging

JEL codes: C4, C14, C45, C53, C58, G13

Acknowledgments: This research did not receive any specific grant from funding agencies in the public, commercial, or not-for-profit sectors

1 Introduction

The primary focus of this study encompasses two distinct yet interrelated facets: the theoretical aspects of the models under examination and their practical implementation for options trading. The significance of this investigation is supported by the growing scale of options portfolios within financial institutions, constructed through complex investment strategies and market-making processes. The consequential impact of these institutions on the market is well-documented ([El Kalak et al. \[2016\]](#)), necessitating a thorough understanding of the theoretical aspects and practical implications of options trading models. Therefore, adequate risk assessment and portfolio hedging became crucial elements of investment activities, especially during periods of rapid volatility fluctuations. Therefore, the efficacy of hedging strategies is evaluated across both low and high-market volatility regimes.

To empirically validate different approaches, algorithmic investment strategies were employed for trading in index options and a related exchange-traded fund (ETF). Based on the concept of volatility risk premium (VRP) and aiming to exploit options premiums by selling volatility, systematic option writing strategies, such as short calls, short puts, and volatility spreads, were utilized with various hedging schemes and sizing methodologies. The models used include the well-established BSM model ([Black and Scholes \[1973\]](#), [Merton \[1973\]](#)), incorporating options' implied volatility as its volatility estimator, and the VG model ([Madan et al. \[1998\]](#)).

The choice of these methodologies is based both on a comprehensive synthesis of existing literature and a pragmatic standpoint. Volatility spreads, including short straddles and short strangles, represent practically employed strategies within the investor community and have been the subject of extensive academic research ([Gao et al. \[2017\]](#), [Hong et al. \[2018\]](#), [Shivaprasad et al. \[2022\]](#)). The BSM model is well-established among market practitioners for its simplicity and reliability ([Karagozoglu \[2022\]](#)). On the other hand, it is known for its certain limitations, such as volatility smiles and skewness premiums ([Corrado and Su \[1996\]](#)). Over the years, research efforts have yielded alternative approaches, such as the Variance-Gamma (VG) model incorporating the variance-gamma stochastic process. This selection of models combines theoretical grounding with practical applicability, offering an exploration of the complexities inherent in options trading methodologies.

While there is a rich literature on options pricing, hedging, and trading, this research stands as a heavily empirical contribution. Although the performance of the BSM and the VG models in options pricing is present in the literature (see e.g., [Lam et al. \[2002\]](#), [Daal and Madan \[2005\]](#)), most articles focus on the comparison of models' pricing capabilities rather than their hedging performance. Some studies have compared hedging methodologies ([Han et al. \[2015\]](#)), but the focus is often on single options hedged once a day. Empirical analyses of volatility spreads and other option writing strategies are widely available in the literature (see e.g., [Chaput and Ederington \[2003\]](#), [Hill et al. \[2006\]](#), [Nikolopoulos et al. \[2007\]](#), [Black and Szado \[2022\]](#)).

There are numerous studies analyzing dynamic delta hedging of options on various asset classes, e.g. cryptocurrency options ([Alexander and Imeraj \[2023\]](#)), equity indices ([Xia et al. \[2023\]](#), [Mozumder et al. \[2016\]](#), [Mikkilä and Kanninen \[2023\]](#)), currencies ([Anderegg et al. \[2022\]](#)), singles stocks ([Hull and White \[2017\]](#)), commodities ([Hull and White \[2017\]](#)), interest rates ([Hull and White \[2017\]](#)), and based on simulated data ([Vittori et al. \[2021\]](#)). However, many of these papers lack realism in market conditions and focus on the performance of derivative instruments. This study aims to bridge the gap by comparing two popular option pricing models in the practical setting of systematic option-writing strategies using intraday hedging and high-frequency data.

The contribution of this study is twofold. Firstly, we provided empirical evidence for choosing the right hedging specification for systematic option-writing strategies on one of the most liquid derivatives markets globally. Secondly, it conducts an extensive backtest of option-writing

strategies, introducing two sizing methods: leverage-aware delta-based sizing and a novel volatility spikes-avoiding VIX-rank methodology. While results suggest that each strategy requires individual analysis, the overarching findings indicate that the BSM model offers more accurate hedging than the VG model when considering portfolio CVaR and VaR. Strategies using the Variance-Gamma model may be more profitable but also riskier. The VIX-rank methodology proves stable, providing reliable returns, although generally underperforming benchmarks in plain annualized returns. Regarding hedging, intraday adjustments every 130 minutes yield the best balance between benefits and costs.

The paper is organized as follows. Section 2 describes the methodology and backtesting procedures, Section 3 describes the data, Section 4 presents the results, and Section 5 concludes.

2 Methodology

2.1 Black-Scholes-Merton Model

The BSM model (Black and Scholes [1973], Merton [1973]) was introduced as a comprehensive model for pricing European options with closed-form solutions based on partial differential equations (PDEs). The main PDE underlying the model is:

$$\frac{\partial V}{\partial t} + \frac{1}{2}\sigma^2 S^2 \frac{\partial^2 V}{\partial S^2} + rS \frac{\partial V}{\partial S} - rV = 0 \quad (1)$$

where V is the price of the option at time t , S is the price of the underlying at time t , r is the risk-free interest rate and σ is the volatility of the underlying asset. The equation 1 indicates that it is possible to neutralize the delta risk by buying or selling the underlying asset with money borrowed at the risk-free rate. The prices of European options can be calculated with the following formulas (Black and Scholes [1973], Merton [1973]):

$$C(S, t) = S_t e^{-qt} \cdot \Phi(d_1) - K e^{-rt} \cdot \Phi(d_2) \quad (2)$$

$$P(S, t) = K e^{-rt} \cdot \Phi(-d_2) - S_t e^{-qt} \cdot \Phi(-d_1) \quad (3)$$

$$d_1 = \frac{\ln(\frac{S_t}{K}) + (r - q)t}{\sigma\sqrt{t}} + \frac{\sigma\sqrt{t}}{2} \quad (4)$$

$$d_2 = \frac{\ln(\frac{S_t}{K}) + (r - q)t}{\sigma\sqrt{t}} - \frac{\sigma\sqrt{t}}{2} = d_1 - \sigma\sqrt{t} \quad (5)$$

where C is the price of the call option, P is the price of the put option, q denotes the continuous dividend rate, K stands for the strike price and $\Phi(\cdot)$ represents the cumulative distribution function of the standard normal distribution. The only unknown parameter that requires estimation is σ , which denotes the underlying asset's volatility.

As options prices can be obtained from the market, and other parameters are known, the BSM model can be adapted to produce volatility instead of prices. In this study, to determine the delta value, we utilized the last available implied volatility for that specific option. Therefore, at each timestamp t , when delta was required, we utilized $\sigma_{i,t-1}^{IV}$, which denotes the i -th option's BSM implied volatility from timestamp $t - 1$, essentially from the previous minute.

The options' deltas were calculated with formulas 6 and 7.

$$\Delta_C = \Phi(d_1) \quad (6)$$

$$\Delta_P = \Phi(d_1) - 1 \quad (7)$$

2.2 Variance-Gamma Model

The VG model is based on a generalization of the Brownian motion, used to describe the process of asset price. Equation 8 presents the Variance-Gamma process as a Brownian motion $W(t)$ with drift θt and the time change modeled with a gamma process $\Gamma(t, 1, \nu)$.

$$X^{VG}(t; \sigma; \nu; \theta) = \theta \Gamma(t; 1; \nu) + \sigma W(\Gamma(t; 1; \nu)) \quad (8)$$

Under the VG model, the evolution of an asset price is described with equation 9.

$$S_t = S_0 e^{(r-q+\omega)t+L(t)}, t \geq 0 \quad (9)$$

where r is the rate of return on the asset, q is the dividend yield, $L(t)$ is a Lèvy process, and $\omega = -\psi_X(-i)$. The characteristic function of $L(t)$ satisfies the following condition:

$$\psi_{X(t)}(\xi) := \mathbb{E}[e^{iX(t)\xi}] = e^{t\psi_L(\xi)} \quad (10)$$

where $\psi_L(\xi)$ is the Lèvy symbol of process $X(t)$. VG symbol is expressed as:

$$\psi_X(\xi) = -\frac{\sigma^2}{2} - \frac{1}{\nu} \ln(1 - i\nu\theta\xi + \nu\xi^2 \frac{\sigma^2}{2}) \quad (11)$$

In this study, we will use a convexity-corrected symbol calculated as:

$$\psi_X^C(\xi) = i(\nu - \psi_X(-i))\xi + \psi_X(\xi) \quad (12)$$

which ensures that $\mathbb{E}[e^{X(t)}] = 1$ for any $\phi_L(\xi)$.

To price options under the Lèvy processes, we employed the frame projection with the Fast Fourier Transform (FFT) methodology (Kirkby [2015]), facilitating quick and efficient pricing. This same methodology was employed for model calibration, i.e., estimating its parameters based on market prices. Calibration was performed every 30 minutes during each trading session to ensure the parameters remained current. A least squares optimizer was used to determine $\{\sigma, \nu, \theta\}$ parameters accurately reflecting prevailing market conditions. To calculate deltas, we used a finite differences approximation as described in equation 13.

To calculate deltas, we employed a finite differences approximation as described in Equation 13.

$$\Delta(t) = \frac{V(t, S + dS) - V(t, S - dS)}{2dS} \quad (13)$$

2.3 Backtesting

We invested considerable effort in realistically backtesting all the strategies to provide valuable insights into real market conditions. Our commissions model reflects fees from the Interactive Brokers brokerage firm¹. Furthermore, we adopted a stringent assumption regarding order fills,

¹See: [Interactive Brokers Commissions](#) for more information.

considering that buy and sell orders are executed at the midpoint of the bid and ask prices, covering half of the bid-ask spread.

We employed additional methodologies to benchmark and compare the results of different model-based strategies. First, the buy-and-hold strategy assumed that at the beginning of the backtesting period, the strategy invested all available cash into the S&P500 Index and held it until the end of the backtesting period. Additionally, we presented results of *naked* strategies, which were the same option-selling strategies with no hedging at all. These benchmarks enabled a realistic assessment of the performance of model-based strategies and facilitated a comparison with what the market offered.

2.4 Performance Metrics

To assess strategies' performances, we utilized several performance metrics considering both the profitability and riskiness of the investment systems. The following definitions were used:

- Daily Returns

$$r_i := \frac{p_i - p_{i-1}}{p_t} \quad (14)$$

Where p_t is asset price on day i of backtest.

- Annualized Compounded Rate of Returns

$$ARC := \prod_{i=1}^n (1 + r_i^{\frac{252}{n}}) - 1 \quad (15)$$

Where n is the number of days in the whole backtesting period.

- Annualized Standard Deviation

$$aSD := \sqrt{252} \cdot \sqrt{\frac{1}{n-1} \sum_{i=1}^n (r_i - \bar{r})^2} \quad (16)$$

Where \bar{r} is the average of daily returns.

- Maximum Drawdown

$$MD := \sup_{(x,y) \in \{(t_i, t_j) \in \mathbb{R} : t_i < t_j\}} \frac{p_x - p_y}{p_x} \quad (17)$$

Where p is the total equity value.

- Maximum Loss Duration

$$MLD := \frac{y - x}{252} \quad (18)$$

Where x, y are days defined in formula 17 and indicate days of consecutive local maxima of the equity values.

- Information Ratios

$$IR := \frac{aRC}{aSD} \quad (19)$$

$$IR^{**} := \frac{IR \cdot \text{sign}(aRC) \cdot aRC}{MD} \quad (20)$$

$$IR^{***} := \frac{aRC^3}{aSD \cdot MD \cdot MLD} * 1000 \quad (21)$$

- Value-at-Risk

$$VaR_\alpha(X) := -\inf \{x \in \mathbb{R} : F_X(x) \geq \alpha\} \quad (22)$$

We used the historical VaR of portfolio returns at a 95% confidence level, which means that we used the 5th percentile of portfolio returns to estimate VaR.

- Conditional Value-at-Risk

$$CVaR_\alpha X := -\frac{1}{\alpha} \int_0^\alpha VaR(\gamma) d\gamma \quad (23)$$

We estimated CVaR (expected shortfall, ES) as the average of returns below $VaR_\alpha(X)$.

In each case, we assumed the number of trading days in a year is 252.

2.5 Investment Strategies

We employed four strategies related to selling options and the volatility risk premium concept. The strategies involve selling options and hedging positions against the exposure to changes in the underlying asset's value. The assumptions were held the same for all strategies and they are described in Table 1.

Table 1: The assumptions of tested strategies.

Step	Name	Description
1	strategy open	Selling options with 7 days to expiration (7DTE) and holding them until expiry
2	strategy reopen	At each expiration date, before the market close and options settlement, we opened another position according to the given strategy so that the system is always in the market.
3	frequency of hedging	In the case of hedged strategies, the options positions were hedged every 30 minutes, 130 minutes, 1 day.
4	time of hedging	The daily hedging position adjustment was done 30 minutes before the NYSE market session closed.
5	basis instrument used for hedging purposes	The delta hedging procedure involves buying and selling the ETF tracking the underlying index.
6	details of hedging	The quantity of ETF shares was determined so that the net delta of the total portfolio was equal to zero.
7	benchmark	The results for naked (unhedged) strategies are presented to serve as a benchmark for assessing hedged strategies' performance.

Note: The procedure described in this table is repeated throughout the whole data set for all four strategies tested in this research.

Table 2 describes options strategies considered in the trading system.

2.5.1 Delta-based sizing

The delta-based sizing was designed to hold the portfolio's leverage at a nearly constant level throughout the investing period. To arrive at a position size for time t we used formula 24.

$$Q_t = \left\lfloor \frac{PV_t}{\sum_i K_i \cdot |\Delta_{i,t}| \cdot M} \right\rfloor \quad (24)$$

Q_t stands for the number of contracts, K_i is the i -th option's strike price, $\Delta_{i,t}$ is the option's delta at time t and M is the contract multiplier, which is equal to 100. PV_t is the portfolio value at time t . This approach incorporates the position's total delta and its leverage compared to the actual

Table 2: Option strategies definitions.

Name	Description	Profit	Loss	Position sizing
Short Call	short at-the-money (ATM) call or out-of-the-money (OTM) call	limited = total premium	unlimited	adjusted dynamically based on delta or VIX rank
Short Put	short at-the-money (ATM) call or out-of-the-money (OTM) put	limited = total premium	unlimited	adjusted dynamically based on delta or VIX rank
Short Straddle	short at-the-money (ATM) call and short at-the-money (ATM) put with the same strike and maturity	limited = total premium	unlimited	adjusted dynamically based on delta or VIX rank
Short Strangle	short out-of-the-money (OTM) call and out-of-the-money (OTM) put with the same maturity, but different strikes	limited = total premium	unlimited	adjusted dynamically based on delta or VIX rank

Note: In practice, straddle and strangle reflect the same idea and straddle is a special case of strangle, when both options have the same strike price.

portfolio value. Investing with a highly leveraged portfolio of short options is related to bearing a tremendous level of risk and increasing margin requirements, which investors should intentionally avoid.

2.5.2 VIX-based sizing

The CBOE Volatility Index (VIX) is a measure of the 30-day expected volatility of the US stock market based on prices of the S&P500 Index and the corresponding options on that index. Since this study addresses investment strategies involving that index and its options, using the industry-recognized volatility index was the natural direction. The VIX-based sizing was designed to avoid holding large positions during volatile periods. To arrive at a position size for time t we used formula 25.

$$Q_t = \left\lfloor \frac{PV_t}{SPX_t} \cdot \rho \cdot (1 - P_{rank}(VIX_t)) \right\rfloor \quad (25)$$

Q_t stands for the number of contracts, PV_t is the portfolio value at time t , ρ is a risk factor, $P_{rank}(VIX_t)$ is a percentile rank of the VIX index at time t compared to the last 252 trading days (1 trading year). ρ is subject to optimizations and its choice is up to investor preferences, as higher values of this parameter imply greater risk, but also potential for higher returns. The introduction of VIX's percentile rank in such a setting intends to take larger positions in relatively low-volatility periods and smaller positions in relatively high-volatility periods.

3 Data

This study is based on 1-minute quotes of the S&P500 Index and the corresponding quotes of S&P500 European index options from the Chicago Board Options Exchange (CBOE). Specifically, the strategies were employed to trade the SPXW options, sometimes referred to as *weeklies*. Those products are European-style options settled with cash and exercised at expiration. The slight difference from the standard SPX options is that the SPXW are P.M. settled, meaning that they are tradable until the end of the session on the expiration date. The contract multiplier is equal to 100. For each minute, we utilized bar data (open, high, low, close) as well as bid and ask quotes.

In addition to the market quotes of the S&P500 Index and its options, we relied on daily quotes of the VIX index from CBOE. The proxy for the risk-free rate was the U.S. 3-Month Treasury Bill rate, and for the BSM model, we utilized the S&P500 Index continuous dividend yield.

Table 3: Summary statistics of daily close returns.

Mean	St.D.	Var	Min	P10	P25	P50	P75	P90	Max	Skew	Kurtosis	S-W Test
0,00046	0,01298	0,00017	-0,1202	-0,0128	-0,0049	0,0009	0,0069	0,0135	0,0942	-0,509	12,878	0,881***

Note: The returns were calculated for a daily close average of the bid and ask prices. P10, P25, P50, P75, P90 stand for 10th, 25th, 50th, 75th and 90th percentiles respectively. The S-W Test column contains test statistics for the Shapiro-Wilk normality test. *, **, *** indicate statistical significance on 0.1, 0.05, and 0.01 significance levels respectively.

Table 3 presets the basic summary statistics of the S&P500 Index daily returns, where the price is represented as the average of bid and ask prices. The average daily return is 0.046%, indicating a slight positive drift over the analyzed period. The standard deviation indicates that the returns can deviate by approximately 1.3% from the mean on a typical day, highlighting a moderate level of market volatility. The minimum return of -0.1202 represents the largest single-day loss in the dataset, which occurred during the COVID-19 crash in March 2020. The percentile values indicate a skewed distribution with more frequent small losses and gains, with the potential for significant adverse movements. The maximum return of around 9.4% was also noted in March 2020, when the COVID-19 crash turned into a market rally. The negative skewness indicates that the distribution of returns has a longer left tail, suggesting that large negative returns are more frequent than large positive returns. The kurtosis value indicates a leptokurtic distribution, meaning the returns have fat tails and a sharp peak compared to a normal distribution. This implies a higher probability of extreme returns, both positive and negative, than what would be expected in a normal distribution. Finally, the Shapiro-Wilk test statistic of 0.881, states that the daily returns are not normally distributed at the 1% significance level. This non-normality is also supported by the high kurtosis and skewness values.

Overall, the summary statistics reveal that the S&P500 Index daily returns exhibit slight positive mean returns, moderate volatility, and a distribution characterized by negative skewness and leptokurtosis. The non-normality of the returns distribution is evident, indicating the presence of fat tails and extreme values, which are also crucial considerations for risk management and option-writing strategies.

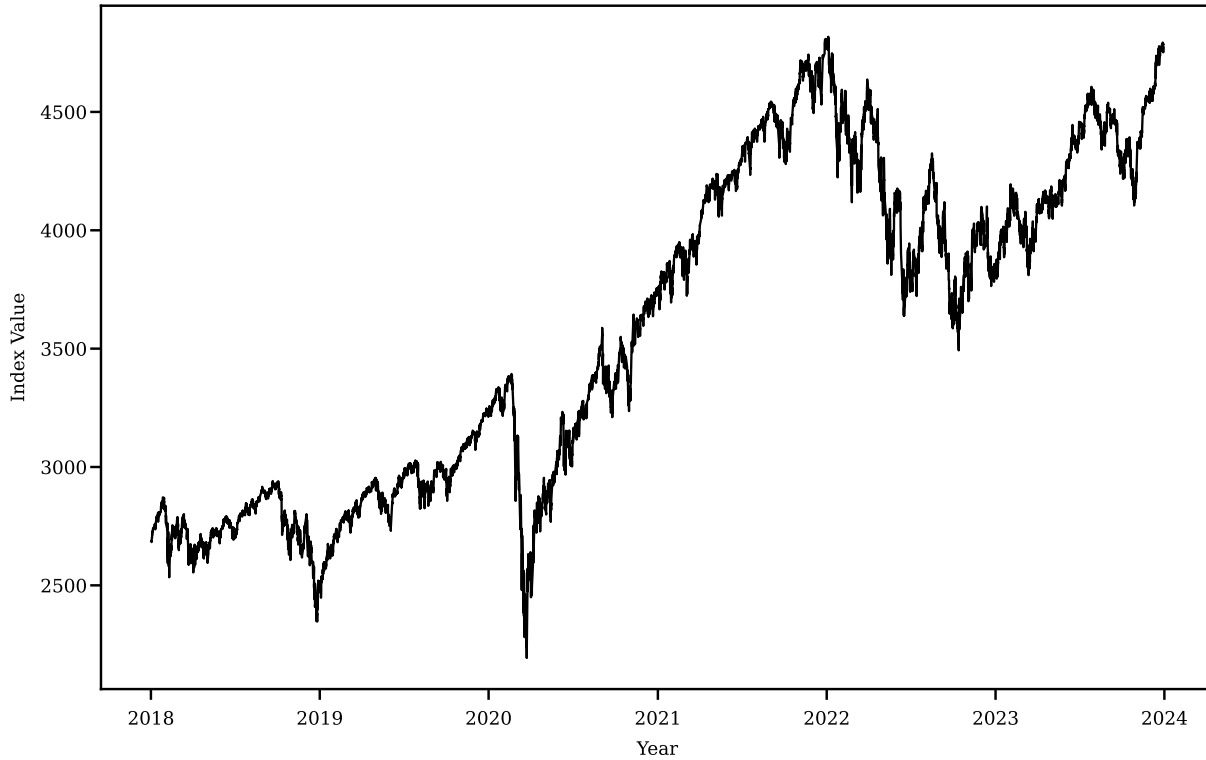
Our investment strategy backtesting started at the beginning of 2018 and lasted until the very end of 2023. Throughout this period, there were various market conditions, including instances of exceptionally high volatility (e.g., the COVID-19 pandemic outbreak), rapid growth (e.g., in 2021), and stabilization (e.g., in 2022), which can all be clearly observed on Figure 1. These diverse economic circumstances facilitated a comprehensive examination of the investment strategies and enabled us to conclude their performance in different environments.

4 Results

4.1 Short Call

Table 4 presents the results of the short-call strategies for each backtested combination. Regarding PnL's standard deviation and drawdown, strategies with VIX-based sizing performed well, delivering stable results with minimal drawdowns. The 10% OTM short call with VIX-based sizing

Figure 1: S&P500 Index quotes from 02-01-2018 to 29-12-2023.



Note: The values presented on the graph are average of 1-minute bid-ask quotes.

produced the best results.

When comparing the BSM-hedged strategies with delta sizing at different hedging intervals (30 minutes, 130 minutes, and once a day) to the naked short call strategies, the naked strategies exhibit significant variability in returns, with high standard deviations (aSD) and maximum drawdowns (MD), reflecting higher risk exposure. For instance, the naked short call with 0% OTM using delta sizing under BSM has a negative annualized return (aRC) of -9.769% and a standard deviation of 0.204. This high risk is mitigated by the hedged strategies. The BSM-hedged strategy hedged every 30 minutes at 0% OTM shows an aRC of 0.878% and a lower aSD of 0.1, indicating a substantial reduction in risk and an improvement in return consistency. Similarly, hedging a strategy with delta sizing every 130 minutes at 0% OTM yields a higher aRC of 3.347% with an aSD of 0.113, further highlighting the benefits of more frequent rehedging. The once-daily rehedging approach also improves performance metrics compared to the naked approach but not as significantly as the more frequent intervals. Notably, rehedging every 130 minutes at 2% OTM produces the highest aRC of 6.504% with a relatively low aSD of 0.102, demonstrating that optimal rehedging intervals and OTM levels can significantly enhance strategy performance. These hedged strategies also show improved information ratios, indicating better risk-adjusted returns. The BSM strategy rehedging every 130 minutes at 5% OTM achieves an IR*** of 13.962, compared to generally lower IRs in naked strategies.

Comparing strategies with VIX sizing and BSM hedging at different rehedging intervals to VIX

sizing naked strategies also reveals notable improvements in performance and risk management. The naked VIX sizing strategies, particularly at 0% OTM, show negative annualized returns and relatively high standard deviations. For instance, the naked VIX sizing strategy at 0% OTM records an aRC of -3.358%, an aSD of 0.062, and an MD of 0.195. In contrast, the VIX sizing with BSM hedging significantly enhances these metrics. The strategy rehedging every 30 minutes at 0% OTM yields an aRC of -0.333% and an aSD of 0.031, reducing both losses and volatility compared to the naked approach. Similarly, rehedging every 130 minutes at 0% OTM results in an aRC of 0.793% and an aSD of 0.036, demonstrating improved returns. The once-daily rehedging strategy also outperforms its naked counterpart, with an aRC of 1.106% and an aSD of 0.045. These hedged strategies also show superior information ratios, indicating better risk-adjusted returns. Furthermore, the CVaR and VaR metrics for hedged strategies are generally lower, indicating reduced potential for extreme losses. For example, the BSM-hedged strategy rehedging every 30 minutes at 5% OTM records a CVaR of 0.303% and a VaR of -0.008%, substantially better than the naked equivalent. Overall, the combination of VIX sizing with BSM hedging at optimal rehedging intervals provides more robust performance, enhancing returns and minimizing risk compared to the naked strategies.

Regarding the Variance-Gamma model, the naked VG delta sizing strategy at 0% OTM shows significant negative returns, elevated standard deviation, and a large maximum drawdown. The remaining naked strategies with this sizing methodology did not stay underwater but are also relatively volatile. Introducing VG hedging at different intervals markedly improves these metrics. The VG delta sizing strategy with 30-minute rehedging at 0% OTM achieves an aRC of 3.721%, an aSD of 0.109, and an MD of 0.156, indicating not only a shift to positive returns but also a reduction in volatility and drawdowns. Similarly, the strategy with 130-minute rehedging at 0% OTM shows an aRC of -3.426%, an aSD of 0.122, and an MD of 0.348, which is negative but better than the naked strategy. The once-daily rehedging strategy at 0% OTM also improves upon the naked approach, with an aRC of -2.156%, an aSD of 0.127, and an MD of 0.356. For the ATM short call, only the most frequent hedging was appropriate. The hedged strategies generally exhibit lower CVaR and VaR metrics, indicating reduced potential for extreme losses. Overall, incorporating VG hedging into delta sizing strategies, especially with frequent rehedging, markedly enhances returns and reduces risk compared to naked VG delta sizing strategies, showcasing the effectiveness of hedging in managing downside risk and improving overall strategy performance.

When comparing hedged strategies with delta sizing, it is not entirely clear which model is a winner. Regarding IR^{***}, in 6 out of 12 cases, the BSM model provided better results, and in the remaining cases, the VG model outperformed. On the other hand, regarding CVaR, the BSM hedging resulted in outcomes closer to 0 in 11 out of 12 cases respectively. Similar conclusions can be drawn when analyzing the VaR measures, which indicate that for intraday hedging, the BSM model is a better choice, providing better value-at-risk measures. For strategies with VIX sizing, it is a very similar story, as in 6 out of 12 cases, the BSM-hedged strategies achieved higher IR^{***}, and in the remaining cases, the VG-hedged strategies did. Generally, the BSM hedging also resulted in better VaR and CVaR metrics, indicating reduced portfolio riskiness.

In summary, the BSM-hedged strategies, whether applied to delta sizing or VIX sizing, tend to outperform the VG-hedged ones in terms of risk measures and risk-adjusted performance. In most cases, the BSM-based strategies outperformed their naked counterparts in terms of VaR and CVaR, indicating that hedging indeed contributed to protection against losses. Although VG-based strategies often yielded higher aRC than the BSM-based ones and higher IR^{***} than the naked strategies, they also tended to carry higher risk. Strategies with VIX-based sizing performed very similarly across both models used for hedging and experienced disturbances for 5% and 10% OTM calls. In terms of aRC and IR^{***}, the VG model generally provided better results for VIX-based

sizing. For almost all strategies, increasing the hedging frequency from once a day to every 130 minutes or from every 130 minutes to every 30 minutes improves the CVaR and VaR metrics. In terms of IR^{***} , however, it is not that obvious and requires a case-by-case analysis.

4.2 Short Put

Table 5 presents the results of the short-put strategies across various combinations. Sixteen parameterizations outperformed the benchmark in terms of IR^{***} , with naked strategies relying on VIX or VG-delta-based sizing demonstrating solid performance.

We begin by comparing naked strategies with different sizing methods. Naked strategies with VIX sizing tend to exhibit lower volatility and drawdowns compared to delta-based sizing methods. For example, the ATM naked strategy using VIX sizing achieves an aRC of 6.568%, an aSD of 0.071, and an MD of 0.130. This indicates that VIX sizing provides a more stable return profile, supported by a higher IR^{***} of 20.341, reflecting better risk-adjusted returns. In contrast, naked strategies using delta BSM sizing generally show higher returns but also increased volatility and drawdowns. For instance, the ATM delta BSM strategy yields an aRC of 3.994% with a significantly higher aSD of 0.279 and an MD of 0.456. This higher risk is reflected in the lower IR^{***} of 0.166. As the OTM percentage increases, the delta BSM strategy at 5% OTM improves in terms of return (aRC of 6.403%) and volatility (aSD of 0.26), but remains more volatile compared to VIX sizing. The delta VG sizing strategies, while offering the potential for higher returns, present mixed performance with varying levels of volatility and drawdowns. At 0% OTM, the delta VG strategy stands out with an aRC of 13.916%, but comes with a high aSD of 0.32 and an MD of 0.548. However, as the OTM percentage increases, the performance stabilizes. For instance, at 5% OTM, the delta VG strategy achieves an aRC of 4.519% with a lower aSD of 0.101 and an MD of 0.143, suggesting improved risk management.

Several key insights emerge when comparing strategies hedged with the BSM model across different re-hedging frequencies (single, 130 minutes, and 30 minutes) to their naked counterparts. Naked strategies generally exhibit higher returns but also come with significantly higher volatility and drawdowns. For instance, the naked ATM short-put strategy with BSM delta sizing yields an aRC of 3.994% with an aSD of 0.279. Conversely, implementing a single daily hedging strategy with the BSM model at the same OTM level results in a much lower aRC of 1.950% but with reduced volatility (aSD of 0.149) and drawdowns (MD of 0.223). This trend of reduced returns coupled with lower risk is consistent across different moneyness levels when comparing naked and hedged strategies. More frequent hedging, such as re-hedging every 130 minutes or every 30 minutes, further stabilizes returns. For example, the delta-based strategy hedged every 130 minutes at 2% OTM produces an aRC of 5.947% with an aSD of 0.158 and an MD of 0.216, which is more balanced compared to its naked counterpart. The 30-minute re-hedging strategy at 2% OTM yields an even higher aRC of 7.890% with moderate volatility. These frequent hedging strategies effectively mitigate the risk of large drawdowns and high volatility associated with naked strategies. Therefore, while naked strategies may offer higher potential returns, BSM hedged strategies, especially those with more frequent re-hedging, provide a more attractive risk-adjusted performance profile, striking a better balance between returns and risk.

VG-hedged strategies with daily re-hedging (single) do not demonstrate general improvement of risk management compared to naked strategies. For instance, the VG daily hedged strategy with delta sizing at 0% OTM shows an aRC of 2.978%, but with a very high aSD of 1.287, and an MD of 0.935. Although the return is lower than the naked counterpart, the strategy significantly reduces volatility and drawdown. Similarly, the VG daily hedged strategy using VIX sizing at 0% OTM achieves an aRC of 1.580%, an aSD of 0.041, and an MD of 0.075, offering a much more stable

Table 4: Short call strategies results.

STRATEGY					aRC (%)	aSD	MD	MLD	IR	IR2	IR3	CVaR (%)	VaR (%)
OPTIONS	MODEL	SIZING	REHEDGING	%OTM									
-	B&H	-	-	-	9,889	0,206	0,340	1,980	0,479	0,140	6,970	-1,935	-3,160
SHORT CALL	NAKED	DELTA BSM	-	0%	-9,769	0,204	0,529	5,968	-0,480	-0,089	-1,449	-3,088	-2,029
SHORT CALL	NAKED	DELTA BSM	-	2%	3,474	0,206	0,273	2,437	0,168	0,021	0,306	-3,589	-1,942
SHORT CALL	NAKED	DELTA BSM	-	5%	4,854	0,108	0,171	0,623	0,450	0,128	9,944	-0,635	-0,045
SHORT CALL	NAKED	DELTA BSM	-	10%	2,327	0,069	0,114	0,024	0,339	0,069	67,508	-0,243	-0,030
SHORT CALL	NAKED	DELTA VG	-	0%	-7,634	0,185	0,439	5,968	-0,413	-0,072	-0,918	-2,770	-1,968
SHORT CALL	NAKED	DELTA VG	-	2%	2,786	0,200	0,371	2,992	0,139	0,010	0,097	-3,147	-1,301
SHORT CALL	NAKED	DELTA VG	-	5%	3,911	0,137	0,238	2,159	0,286	0,047	0,852	-0,860	-0,025
SHORT CALL	NAKED	DELTA VG	-	10%	0,840	0,022	0,022	0,036	0,375	0,142	33,424	-0,087	-0,003
SHORT CALL	NAKED	VIX	-	0%	-3,358	0,062	0,195	5,968	-0,540	-0,093	-0,524	-1,056	-0,714
SHORT CALL	NAKED	VIX	-	2%	0,938	0,026	0,044	1,480	0,355	0,077	0,485	-0,464	-0,196
SHORT CALL	NAKED	VIX	-	5%	0,501	0,006	0,008	0,179	0,779	0,477	13,375	-0,064	-0,006
SHORT CALL	NAKED	VIX	-	10%	0,076	0,001	0,002	0,044	0,647	0,308	5,363	-0,006	-0,001
SHORT CALL	BSM	DELTA	30	0%	0,878	0,100	0,242	2,492	0,088	0,003	0,011	-1,582	-0,637
SHORT CALL	BSM	DELTA	30	2%	5,428	0,090	0,193	2,611	0,602	0,169	3,519	-1,332	-0,462
SHORT CALL	BSM	DELTA	30	5%	1,942	0,038	0,068	1,897	0,516	0,147	1,507	-0,279	-0,046
SHORT CALL	BSM	DELTA	30	10%	0,102	0,012	0,018	3,825	0,085	0,005	0,001	-0,093	-0,015
SHORT CALL	BSM	DELTA	130	0%	3,347	0,113	0,231	2,492	0,297	0,043	0,578	-1,724	-0,693
SHORT CALL	BSM	DELTA	130	2%	6,504	0,102	0,209	2,611	0,635	0,197	4,918	-1,422	-0,565
SHORT CALL	BSM	DELTA	130	5%	3,674	0,047	0,040	1,865	0,781	0,709	13,962	-0,274	-0,041
SHORT CALL	BSM	DELTA	130	10%	0,404	0,012	0,018	1,516	0,329	0,075	0,200	-0,083	-0,016
SHORT CALL	BSM	DELTA	SINGLE	0%	-2,798	0,152	0,358	3,865	-0,184	-0,014	-0,104	-2,512	-0,984
SHORT CALL	BSM	DELTA	SINGLE	2%	3,183	0,147	0,309	2,075	0,217	0,022	0,343	-2,301	-0,745
SHORT CALL	BSM	DELTA	SINGLE	5%	1,799	0,059	0,126	1,901	0,305	0,043	0,411	-0,355	-0,038
SHORT CALL	BSM	DELTA	SINGLE	0%	0,359	0,011	0,018	1,262	0,323	0,065	0,185	-0,076	-0,017
SHORT CALL	BSM	VIX	30	0%	-0,333	0,031	0,099	1,381	-0,106	-0,004	-0,009	-0,539	-0,215
SHORT CALL	BSM	VIX	30	2%	0,830	0,015	0,029	0,738	0,546	0,157	1,765	-0,228	-0,069
SHORT CALL	BSM	VIX	30	5%	0,237	0,004	0,008	1,365	0,617	0,174	0,303	-0,039	-0,008
SHORT CALL	BSM	VIX	30	10%	0,058	0,001	0,001	0,619	0,752	0,363	0,343	-0,008	-0,003
SHORT CALL	BSM	VIX	130	0%	0,793	0,036	0,083	2,770	0,222	0,021	0,060	-0,588	-0,222
SHORT CALL	BSM	VIX	130	2%	0,696	0,018	0,024	0,774	0,380	0,111	0,996	-0,270	-0,083
SHORT CALL	BSM	VIX	130	5%	0,351	0,004	0,006	1,718	0,936	0,572	1,167	-0,040	-0,008
SHORT CALL	BSM	VIX	130	10%	0,077	0,001	0,001	0,956	1,027	0,806	0,649	-0,007	-0,003
SHORT CALL	BSM	VIX	SINGLE	0%	1,106	0,045	0,082	1,992	0,247	0,033	0,186	-0,762	-0,286
SHORT CALL	BSM	VIX	SINGLE	2%	0,732	0,025	0,056	2,786	0,290	0,038	0,099	-0,340	-0,098
SHORT CALL	BSM	VIX	SINGLE	5%	0,442	0,005	0,010	0,563	0,931	0,399	3,134	-0,045	-0,010
SHORT CALL	BSM	VIX	SINGLE	10%	0,110	0,001	0,001	0,528	1,582	2,453	5,127	-0,006	-0,003
SHORT CALL	VG	DELTA	30	0%	3,721	0,109	0,156	2,333	0,342	0,081	1,299	-1,797	-0,992
SHORT CALL	VG	DELTA	30	2%	3,597	0,149	0,274	3,087	0,242	0,032	0,370	-2,438	-0,826
SHORT CALL	VG	DELTA	30	5%	4,025	0,103	0,163	0,944	0,391	0,097	4,121	-0,788	-0,075
SHORT CALL	VG	DELTA	30	10%	0,575	0,018	0,021	1,893	0,317	0,085	0,258	-0,097	-0,010
SHORT CALL	VG	DELTA	130	0%	-3,426	0,122	0,348	5,968	-0,280	-0,028	-0,158	-2,167	-1,180
SHORT CALL	VG	DELTA	130	2%	4,433	0,172	0,342	2,992	0,258	0,033	0,495	-2,626	-0,923
SHORT CALL	VG	DELTA	130	5%	4,913	0,123	0,212	0,917	0,399	0,093	4,965	-0,827	-0,093
SHORT CALL	VG	DELTA	130	10%	0,404	0,012	0,018	1,516	0,329	0,075	0,200	-0,083	-0,016
SHORT CALL	VG	DELTA	SINGLE	0%	-2,156	0,127	0,356	5,968	-0,170	-0,010	-0,037	-2,121	-1,234
SHORT CALL	VG	DELTA	SINGLE	2%	3,646	0,177	0,351	3,115	0,206	0,021	0,250	-2,675	-0,999
SHORT CALL	VG	DELTA	SINGLE	5%	4,622	0,130	0,226	1,067	0,354	0,073	3,143	-0,906	-0,087
SHORT CALL	VG	DELTA	SINGLE	10%	0,803	0,021	0,021	1,067	0,391	0,149	1,120	-0,097	-0,009
SHORT CALL	VG	VIX	30	0%	0,445	0,028	0,050	1,440	0,157	0,014	0,044	-0,481	-0,247
SHORT CALL	VG	VIX	30	2%	0,834	0,017	0,033	0,849	0,489	0,122	1,202	-0,292	-0,128
SHORT CALL	VG	VIX	30	5%	0,350	0,006	0,012	1,365	0,555	0,166	0,427	-0,081	-0,020
SHORT CALL	VG	VIX	30	10%	0,051	0,001	0,002	2,194	0,520	0,110	0,026	-0,012	-0,003
SHORT CALL	VG	VIX	130	0%	0,658	0,033	0,063	2,111	0,199	0,021	0,065	-0,563	-0,318
SHORT CALL	VG	VIX	130	2%	0,617	0,019	0,050	1,611	0,324	0,040	0,154	-0,337	-0,158
SHORT CALL	VG	VIX	130	5%	0,473	0,007	0,010	0,817	0,686	0,324	1,878	-0,095	-0,025
SHORT CALL	VG	VIX	130	10%	0,077	0,001	0,001	0,956	1,027	0,806	0,649	-0,007	-0,003
SHORT CALL	VG	VIX	SINGLE	0%	0,906	0,042	0,077	2,448	0,215	0,025	0,093	-0,720	-0,401
SHORT CALL	VG	VIX	SINGLE	2%	1,924	0,021	0,049	0,595	0,911	0,358	11,585	-0,366	-0,187
SHORT CALL	VG	VIX	SINGLE	5%	0,589	0,007	0,013	0,694	0,796	0,355	3,009	-0,102	-0,024
SHORT CALL	VG	VIX	SINGLE	10%	0,139	0,001	0,001	0,488	1,392	1,978	5,623	-0,009	-0,003

Note: The best (i.e. highest or lowest) result in each column is bolded. All strategies with VIX sizing were backtested with risk-factor parameter $\rho = 1.4$. *NAKED* stands for strategies without hedging at all, i.e. only taking short positions in options. *SINGLE* rehedging stands for hedging the portfolio only once a day.

performance profile. Re-hedging every 130 minutes further enhances the risk-adjusted performance of VG-hedged strategies. For instance, the ATM VG 130-minute hedged strategy with delta sizing yields an aRC of 13.127%, an aSD of 1.536, and an MD of 0.923. This demonstrates a high return similar to the naked strategy but with better risk control. On the other hand, the ATM VG 130-minute hedged strategy with VIX sizing achieves an aRC of 1.677%, an aSD of 0.038, and an MD of 0.094, indicating enhanced stability and lower risk. VG strategies hedged every 30 minutes provide the most frequent risk adjustments, presumably yielding the most balanced performance among all hedged strategies. Nevertheless, this comes at the cost of decreased profitability, especially for the ATM strategy. VG hedged strategies, particularly those with more frequent re-hedging (such as every 130 minutes or 30 minutes), provide a more balanced performance by mitigating risk. Among the hedged strategies, those using VIX sizing generally offer greater stability and lower risk. Conversely, delta sizing can yield higher returns but also introduces more variability, thus requiring a higher risk tolerance.

Finally, we compare hedged strategies across models and sizing methods. In the case of delta-based sizing, the BSM model provided higher IR^{***} in 10 out of 12 cases, with the two VG outperformance instances observed for daily hedging. Comparing CVaR and VaR measures also points towards the closed-form model as the better one, indicating its hedging capabilities provide better protection against adverse market movements. On the other hand, results for the VIX sizing approach are not as straightforward as in the delta sizing case. Although the VaR and CVaR measures again point towards the BSM model in the vast majority, the IR^{***} measure is higher for the VG-hedged strategies in half of the results. Moreover, this particular risk-adjusted metric indicates that the market-calibrated model performed better with strategies closer to at-the-money.

In summary, naked strategies generally delivered higher returns, particularly those using delta VG sizing. However, these come with increased volatility and drawdowns, which can be undesirable for risk-averse investors. Both BSM and VG models can effectively reduce risk through hedging. More frequent re-hedging (e.g., every 130 or 30 minutes) provides better risk-adjusted performance. The BSM model generally yielded better hedging results, but in risk-adjusted profitability terms, the VG model also provided several desirable strategies.

4.3 Short Strangle

Table 6 presents the performance of short straddles and short strangles across all possible parameterizations. Two naked systems outperformed the benchmark B&H in terms of aRC. Notably, two naked systems outperformed the B&H benchmark in terms of aRC. Specifically, both were 5% OTM strangles employing delta-based sizing — one utilizing the BSM model and the other employing the VG model. Eighteen strategies exhibited superior results compared to the index-tracking benchmark in terms of the IR^{***} .

For the at-the-money (ATM) short straddle strategy with delta sizing based on the BSM model, the annualized return was -1.181%, with an annualized Standard Deviation (aSD) of 0.123 and an Information Ratio (IR^{***}) of -0.007. When utilizing delta sizing based on the VG model, the aRC decreased further to -2.262%, IR^{***} to -0.039, and the aSD increased to 0.134. Conversely, the ATM short straddle strategy employing VIX sizing exhibited different outcomes: an aRC of 3.041%, an aSD of 0.071, and an IR^{***} of 1.774.

The performance of the short strangle strategy, involving the sale of out-of-the-money options, varied significantly based on strike distance and sizing method. For instance, the 2% OTM short strangle with delta sizing using the BSM model yielded an aRC of 4.783%, an aSD of 0.213, and an IR^{***} of 0.389. Increasing the strike distance to 5% OTM improved the aRC to 10.270%, with an aSD of 0.13 and IR^{***} of 64.160. The 10% OTM variant delivered an annualized return of 4.414%,

Table 5: Short put strategies results.

STRATEGY					aRC (%)	aSD	MD	MLD	IR	IR2	IR3	CVaR (%)	VaR (%)
OPTIONS	MODEL	SIZING	REHEDGING	%OTM									
-	B&H	-	-	-	9,889	0,206	0,340	1,980	0,479	0,140	6,970	-1,935	-3,160
SHORT PUT	NAKED	DELTA BSM	-	0%	3,994	0,279	0,456	3,016	0,143	0,013	0,166	-4,893	-2,802
SHORT PUT	NAKED	DELTA BSM	-	2%	4,668	0,354	0,542	2,004	0,132	0,011	0,265	-6,485	-2,599
SHORT PUT	NAKED	DELTA BSM	-	5%	6,403	0,260	0,351	0,563	0,247	0,045	5,114	-1,649	-0,134
SHORT PUT	NAKED	DELTA BSM	-	10%	4,138	0,305	0,378	0,040	0,136	0,015	15,451	-1,073	-0,017
SHORT PUT	NAKED	DELTA VG	-	0%	13,916	0,320	0,548	1,722	0,435	0,110	8,916	-5,560	-2,440
SHORT PUT	NAKED	DELTA VG	-	2%	4,308	0,210	0,472	3,829	0,205	0,019	0,210	-3,295	-1,235
SHORT PUT	NAKED	DELTA VG	-	5%	4,519	0,101	0,143	0,639	0,445	0,141	9,952	-0,953	-0,102
SHORT PUT	NAKED	DELTA VG	-	10%	2,868	0,079	0,115	0,024	0,362	0,090	108,648	-0,399	-0,008
SHORT PUT	NAKED	VIX	-	0%	6,568	0,071	0,130	1,508	0,926	0,467	20,341	-1,279	-0,722
SHORT PUT	NAKED	VIX	-	2%	3,352	0,039	0,062	1,329	0,867	0,468	11,803	-0,704	-0,299
SHORT PUT	NAKED	VIX	-	5%	1,800	0,016	0,031	0,679	1,119	0,658	17,443	-0,202	-0,033
SHORT PUT	NAKED	VIX	-	10%	0,615	0,004	0,009	0,504	1,427	1,025	12,520	-0,042	-0,004
SHORT PUT	BSM	DELTA	30	0%	3,603	0,113	0,172	2,171	0,320	0,067	1,113	-1,438	-0,602
SHORT PUT	BSM	DELTA	30	2%	7,890	0,149	0,150	2,103	0,530	0,279	10,462	-2,053	-0,690
SHORT PUT	BSM	DELTA	30	5%	7,489	0,117	0,063	2,397	0,640	0,759	23,726	-0,395	-0,059
SHORT PUT	BSM	DELTA	30	10%	6,965	0,154	0,059	0,774	0,454	0,536	48,244	-0,202	-0,012
SHORT PUT	BSM	DELTA	130	0%	4,068	0,111	0,156	2,171	0,367	0,096	1,798	-1,491	-0,703
SHORT PUT	BSM	DELTA	130	2%	5,947	0,158	0,216	2,151	0,377	0,104	2,866	-2,419	-0,847
SHORT PUT	BSM	DELTA	130	5%	7,485	0,098	0,061	2,381	0,761	0,936	29,419	-0,400	-0,068
SHORT PUT	BSM	DELTA	130	10%	5,949	0,118	0,059	0,405	0,504	0,510	74,931	-0,206	-0,014
SHORT PUT	BSM	DELTA	SINGLE	0%	1,950	0,149	0,223	1,234	0,131	0,011	0,181	-2,206	-0,930
SHORT PUT	BSM	DELTA	SINGLE	2%	-12,968	0,245	0,644	5,881	-0,529	-0,107	-2,351	-4,455	-1,541
SHORT PUT	BSM	DELTA	SINGLE	5%	6,051	0,155	0,128	2,516	0,390	0,184	4,429	-0,758	-0,084
SHORT PUT	BSM	DELTA	SINGLE	10%	8,112	0,176	0,151	1,214	0,462	0,248	16,559	-0,378	-0,013
SHORT PUT	BSM	VIX	30	0%	-1,817	0,033	0,147	2,929	-0,543	-0,067	-0,416	-0,558	-0,248
SHORT PUT	BSM	VIX	30	2%	-0,859	0,019	0,074	5,175	-0,442	-0,051	-0,085	-0,346	-0,125
SHORT PUT	BSM	VIX	30	5%	0,725	0,006	0,014	1,119	1,197	0,604	3,911	-0,087	-0,026
SHORT PUT	BSM	VIX	30	10%	0,319	0,004	0,008	1,444	0,755	0,306	0,676	-0,036	-0,005
SHORT PUT	BSM	VIX	130	0%	-1,336	0,036	0,136	2,921	-0,374	-0,037	-0,169	-0,588	-0,261
SHORT PUT	BSM	VIX	130	2%	-0,727	0,021	0,076	5,175	-0,340	-0,033	-0,046	-0,377	-0,146
SHORT PUT	BSM	VIX	130	5%	0,679	0,007	0,015	1,361	1,042	0,457	2,279	-0,101	-0,026
SHORT PUT	BSM	VIX	130	10%	0,349	0,004	0,009	0,976	0,834	0,333	1,192	-0,039	-0,006
SHORT PUT	BSM	VIX	SINGLE	0%	-0,776	0,045	0,165	2,083	-0,171	-0,008	-0,030	-0,755	-0,289
SHORT PUT	BSM	VIX	SINGLE	2%	-1,309	0,029	0,087	5,766	-0,446	-0,067	-0,152	-0,516	-0,163
SHORT PUT	BSM	VIX	SINGLE	5%	1,007	0,009	0,018	0,754	1,176	0,672	8,970	-0,119	-0,027
SHORT PUT	BSM	VIX	SINGLE	10%	0,407	0,005	0,007	1,131	0,889	0,493	1,775	-0,040	-0,006
SHORT PUT	VG	DELTA	30	0%	-21,765	0,540	0,853	3,929	-0,403	-0,103	-5,697	-9,014	-3,366
SHORT PUT	VG	DELTA	30	2%	0,385	0,143	0,346	5,675	0,027	0,000	0,000	-2,325	-0,938
SHORT PUT	VG	DELTA	30	5%	2,559	0,050	0,061	1,234	0,516	0,216	4,486	-0,585	-0,189
SHORT PUT	VG	DELTA	30	10%	2,922	0,052	0,068	2,448	0,558	0,241	2,876	-0,433	-0,138
SHORT PUT	VG	DELTA	130	0%	13,127	1,536	0,923	1,377	0,085	0,012	1,159	-8,335	-3,231
SHORT PUT	VG	DELTA	130	2%	2,916	0,146	0,347	4,702	0,199	0,017	0,104	-2,267	-0,861
SHORT PUT	VG	DELTA	130	5%	3,201	0,062	0,082	1,060	0,519	0,204	6,161	-0,648	-0,206
SHORT PUT	VG	DELTA	130	10%	5,949	0,118	0,059	0,405	0,504	0,510	74,931	-0,206	-0,014
SHORT PUT	VG	DELTA	SINGLE	0%	2,978	1,287	0,935	2,651	0,023	0,001	0,008	-9,326	-3,949
SHORT PUT	VG	DELTA	SINGLE	2%	2,435	0,148	0,332	4,687	0,165	0,012	0,063	-2,262	-0,884
SHORT PUT	VG	DELTA	SINGLE	5%	3,280	0,068	0,080	1,198	0,486	0,198	5,422	-0,713	-0,232
SHORT PUT	VG	DELTA	SINGLE	10%	2,869	0,062	0,070	1,806	0,461	0,190	3,016	-0,557	-0,188
SHORT PUT	VG	VIX	30	0%	0,436	0,034	0,079	2,083	0,129	0,007	0,015	-0,611	-0,333
SHORT PUT	VG	VIX	30	2%	-0,534	0,023	0,066	2,687	-0,237	-0,019	-0,038	-0,419	-0,196
SHORT PUT	VG	VIX	30	5%	-0,259	0,014	0,037	2,762	-0,180	-0,013	-0,012	-0,222	-0,130
SHORT PUT	VG	VIX	30	10%	-0,946	0,012	0,066	4,980	-0,808	-0,115	-0,218	-0,186	-0,115
SHORT PUT	VG	VIX	130	0%	1,677	0,038	0,094	2,083	0,447	0,080	0,644	-0,670	-0,390
SHORT PUT	VG	VIX	130	2%	0,352	0,025	0,053	2,278	0,140	0,009	0,014	-0,460	-0,220
SHORT PUT	VG	VIX	130	5%	0,118	0,016	0,030	2,762	0,074	0,003	0,001	-0,248	-0,138
SHORT PUT	VG	VIX	130	10%	0,349	0,004	0,009	0,976	0,834	0,333	1,192	-0,039	-0,006
SHORT PUT	VG	VIX	SINGLE	0%	1,580	0,041	0,075	2,083	0,381	0,080	0,606	-0,739	-0,449
SHORT PUT	VG	VIX	SINGLE	2%	0,603	0,029	0,059	3,107	0,206	0,021	0,041	-0,508	-0,258
SHORT PUT	VG	VIX	SINGLE	5%	0,373	0,017	0,028	1,159	0,219	0,029	0,093	-0,265	-0,155
SHORT PUT	VG	VIX	SINGLE	10%	-0,540	0,012	0,056	4,980	-0,450	-0,043	-0,047	-0,183	-0,124

Note: The best (i.e. highest or lowest) result in each column is bolded. All strategies with VIX sizing were backtested with risk-factor parameter $\rho = 1.4$. *NAKED* stands for strategies without hedging at all, i.e. only taking short positions in options. *SINGLE* reheding stands for hedging the portfolio only once a day.

with an aSD of 0.241. Conversely, when employing delta sizing based on the VG model, the 2% OTM short strangle achieved an annualized return of 6.636%, with an aSD of 0.283, an IR*** of 0.672, and a CVaR of -4.931%.

The VIX-sized short strangles presented a distinct performance profile. The 2% OTM variant recorded an aRC of 4.259%, an aSD of 0.044, an IR*** of 19.402, and a CVaR of -0.791%. The 5% OTM variant showed an aRC of 2.318% and an aSD of 0.017, while the 10% OTM variant had an annualized return of 0.693% with an aSD of 0.004.

For the short straddle ATM strategy with BSM delta sizing and a reheding frequency of 30 minutes, the annualized return was 3.652%, with an aSD of 0.075, an IR*** of 3.304, and a CVaR of -1.169%. Decreasing the reheding frequency to every 130 minutes improved the aRC to 4.876%, with an aSD of 0.081, and a CVaR of -1.278%. However, hedging just once daily led to a significant drop in performance, with an aRC of 0.818%, an aSD of 0.011, and a CVaR of -1.890%. For the short straddle ATM strategy with VIX sizing, the performance varied with the reheding frequency. At 30-minute intervals, the aRC was -1.191%, with an aSD of 4.8%, and a CVaR of -0.864%. Reheding every 130 minutes resulted in an aRC of 0.249%, an aSD of 0.052, and a CVaR of -0.943%. With daily reheding, the aRC was 0.941%, with an aSD of 0.069, an information ratio of 0.137, and a CVaR of -1.257%.

In the case of the short strangle strategy with BSM delta sizing at different strike distances, performance was influenced significantly by reheding frequency. For instance, reheding every 30 minutes resulted in an aRC of 3.919% for the 2% OTM strike, compared to -6.001% with daily reheding. VIX sizing also demonstrated varied results across different reheding frequencies. For instance, in the case of the short strangle strategy with BSM delta sizing and a 2% OTM strike, reheding every 30 minutes resulted in an aRC of 3.919%, an aSD of 0.113, and a CVaR of -2.034%. When decreasing hedging to 130-minute intervals, the aRC increased to 4.035%, however, CVaR rose to -2.264%. Daily reheding caused a drop in performance, leading to an annualized return of -6.001%, an aSD of 0.183, and a CVaR of -3.473%. When using VIX sizing, the aRC with 30-minute reheding was 4.259%, an aSD of 0.044, and a CVaR of -0.791%. For 130-minute intervals, the return was 3.981%, an aSD of 4.8%, and a CVaR of -0.862%. Daily reheding resulted in an annualized return of 2.947%, an aSD of 0.051, an information ratio of 0.578, and a CVaR of -0.940%. Overall, the VIX-based sizing provided more stable results in those cases.

When examining the short strangle strategy with 5% OTM options to VG-hedged strategy with 30-minute reheding yielded an aRC of 4.328%, slightly lower than the naked strategy. However, it demonstrated a lower aSD of 0.255 and a significantly reduced MD of 2.448%. The VG hedged strategy reheded every 30 minutes consistently showed improved risk metrics compared to naked strategies. Despite sometimes slightly lower aRC values, the reduction in aSD and CVaR indicates better risk management, which is crucial for maintaining stability during volatile market conditions. The 2% OTM strangle with delta sizing provided aRC of 7.149% and IR** of 1.424, which are both better than the naked counterpart. Generally, strategies hedged with the VG every 130 minutes struck a balance between performance and risk, aiming to capture market movements efficiently while avoiding excessive transaction costs associated with more frequent hedging.

While offering simplicity and cost-effectiveness, daily hedging in the VG model generally resulted in lower risk-adjusted returns compared to more frequent hedging intervals. However, when comparing the delta-sizing strategies with options 2%, 5%, and 10% out-of-the-money, the differences in the risk-adjusted metrics are relatively small, hence it is worth considering adjusting the position only once a day.

To make the analysis complete, we also need to look at the comparison of hedged strategies between the two models. When comparing the delta sizing, the BSM model performs much better and delivers higher IR*** in 10 out of 12 backtest combinations. Moreover, it provides better

VaR and CVaR measures in all considered delta-based strategies, making it a better choice for those applications. On the other hand, VIX-sizing results showed that the VG model is capable of providing higher IR*** in half of the backtests. Nevertheless, the closed-form model again proved itself useful by showcasing better hedging capabilities and providing better portfolio VaR and CVaR across all backtests.

The comparison of naked and BSM-hedged strategies across different hedging time frames and sizing methods highlights significant differences in performance. Naked strategies tend to offer higher returns but come with greater risk. The BSM-hedged strategies, particularly those with frequent rehedging, provide a more stable return profile with reduced risk, though the frequency of rehedging and sizing method play crucial roles in determining their efficacy. The VG-hedged strategies are capable of providing profits but come with relatively higher volatility. In conclusion, while naked strategies offer the potential for higher returns, they come at the expense of increased volatility and drawdowns. Implementing the VG model for hedging, particularly with more frequent rehedging intervals and delta-based sizing, emerges as a prudent approach for balancing risk and return in quantitative option writing strategies. The best hedging results are however achieved using the Black-Scholes-Merton model.

5 Conclusions

This research provided an overview of model-based volatility trading with S&P500 index options, exploring option-writing strategies with varying moneyness levels. Two sizing methods, based on delta and the VIX Index, were designed. All hedged strategies used portfolio delta approximations from the BSM model with implied volatility or from the Variance-Gamma model calibrated to the market. Buy-and-hold and naked strategies were presented as benchmarks. The analysis leveraged 1-minute data of the S&P500 Index and corresponding options from the CBOE, alongside metrics like VIX index for volatility and risk-free rates for pricing models.

The findings reveal distinct performance patterns across different option writing strategies. Short call strategies, particularly those employing VIX-based sizing, demonstrated stability with minimal drawdowns compared to delta-based strategies. Strategies hedged with the Black-Scholes-Merton (BSM) model, especially those with more frequent rehedging intervals, consistently delivered improved risk-adjusted returns and lower volatility. In contrast, the VG-hedged strategies exhibited greater exposure to risk.

Similarly, in short-put strategies, VIX-sized strategies generally exhibited lower volatility and drawdowns than their delta-sized counterparts. BSM-hedged strategies, again with more frequent rehedging, provided a balanced approach with reduced risk, highlighting their effectiveness in managing downside risk while maintaining competitive returns.

The analysis of short strangle strategies underscored the impact of strike distance, sizing method, and rehedging frequency on performance. Delta-based strategies with BSM model hedging showed varied performance across different strike distances and rehedging intervals, demonstrating the potential for stable returns with controlled risk.

Comparative analysis between the BSM and VG models revealed that the BSM model consistently outperformed in terms of risk measures such as Conditional Value at Risk (CVaR) and Value at Risk (VaR) across most strategies. The VG model showed competitive performance in a few systems, mainly the VIX-sized strategies, highlighting its suitability under specific circumstances.

In conclusion, while naked strategies offered higher potential returns, they also posed greater risks in terms of volatility and drawdowns. Hedged strategies, particularly those using the BSM model with optimal rehedging intervals, emerged as effective in balancing risk and return. Investors

Table 6: Short strangle strategies results.

STRATEGY					aRC (%)	aSD	MD	MLD	IR	IR2	IR3	CVaR (%)	VaR (%)
OPTIONS	MODEL	SIZING	REHEDGING	%OTM									
-	B&H	-	-	-	9,889	0,206	0,340	1,980	0,479	0,140	6,970	-1,935	-3,160
SHORT STRADDLE	NAKED	DELTA BSM	-	0%	-1,181	0,123	0,319	5,952	-0,096	-0,004	-0,007	-2,060	-1,229
SHORT STRANGLE	NAKED	DELTA BSM	-	2%	4,783	0,213	0,414	3,198	0,225	0,026	0,389	-4,000	-2,017
SHORT STRANGLE	NAKED	DELTA BSM	-	5%	10,270	0,130	0,189	0,687	0,789	0,429	64,160	-1,085	-0,145
SHORT STRANGLE	NAKED	DELTA BSM	-	10%	4,414	0,241	0,349	0,083	0,183	0,023	12,295	-1,015	-0,017
SHORT STRADDLE	NAKED	DELTA VG	-	0%	-2,262	0,134	0,371	5,952	-0,169	-0,010	-0,039	-2,313	-1,327
SHORT STRANGLE	NAKED	DELTA VG	-	2%	6,636	0,283	0,518	2,964	0,234	0,030	0,672	-4,931	-2,242
SHORT STRANGLE	NAKED	DELTA VG	-	5%	10,409	0,213	0,265	1,214	0,488	0,192	16,453	-1,924	-0,256
SHORT STRANGLE	NAKED	DELTA VG	-	10%	6,303	0,244	0,336	0,032	0,259	0,049	96,347	-0,935	-0,014
SHORT STRADDLE	NAKED	VIX	-	0%	3,041	0,071	0,100	2,246	0,431	0,131	1,774	-1,237	-0,717
SHORT STRANGLE	NAKED	VIX	-	2%	4,259	0,044	0,079	1,147	0,971	0,522	19,402	-0,791	-0,392
SHORT STRANGLE	NAKED	VIX	-	5%	2,318	0,017	0,030	0,488	1,370	1,053	50,026	-0,222	-0,052
SHORT STRANGLE	NAKED	VIX	-	10%	0,693	0,004	0,009	0,405	1,565	1,271	21,759	-0,044	-0,005
SHORT STRADDLE	BSM	DELTA	30	0%	3,652	0,075	0,144	1,373	0,489	0,124	3,304	-1,169	-0,573
SHORT STRANGLE	BSM	DELTA	30	2%	3,919	0,113	0,159	2,520	0,348	0,085	1,329	-2,034	-0,943
SHORT STRANGLE	BSM	DELTA	30	5%	7,300	0,074	0,065	1,230	0,986	1,108	65,741	-0,577	-0,124
SHORT STRANGLE	BSM	DELTA	30	10%	6,651	0,117	0,122	0,361	0,568	0,311	57,272	-0,361	-0,015
SHORT STRADDLE	BSM	DELTA	130	0%	4,876	0,081	0,090	1,254	0,604	0,328	12,756	-1,278	-0,622
SHORT STRANGLE	BSM	DELTA	130	2%	4,035	0,128	0,190	2,258	0,316	0,067	1,200	-2,264	-0,025
SHORT STRANGLE	BSM	DELTA	130	5%	7,963	0,067	0,066	1,897	1,181	1,421	59,669	-0,568	-0,112
SHORT STRANGLE	BSM	DELTA	130	10%	6,689	0,101	0,127	0,361	0,660	0,347	64,206	-0,397	-0,016
SHORT STRADDLE	BSM	DELTA	SINGLE	0%	0,818	0,110	0,181	2,083	0,075	0,003	0,013	-1,890	-0,888
SHORT STRANGLE	BSM	DELTA	SINGLE	2%	-6,001	0,183	0,433	5,897	-0,327	-0,045	-0,462	-3,473	-1,477
SHORT STRANGLE	BSM	DELTA	SINGLE	5%	7,705	0,097	0,116	1,079	0,795	0,528	37,659	-0,875	-0,153
SHORT STRANGLE	BSM	DELTA	SINGLE	10%	5,703	0,153	0,259	1,214	0,373	0,082	3,850	-0,625	-0,019
SHORT STRADDLE	BSM	VIX	30	0%	-1,191	0,048	0,194	2,369	-0,250	-0,015	-0,077	-0,864	-0,399
SHORT STRANGLE	BSM	VIX	30	2%	0,305	0,027	0,079	2,095	0,115	0,004	0,006	-0,470	-0,209
SHORT STRANGLE	BSM	VIX	30	5%	1,010	0,007	0,015	0,810	1,370	0,952	11,879	-0,111	-0,030
SHORT STRANGLE	BSM	VIX	30	10%	0,399	0,004	0,007	1,087	0,978	0,543	1,992	-0,037	-0,005
SHORT STRADDLE	BSM	VIX	130	0%	0,249	0,052	0,149	2,921	0,048	0,001	0,001	-0,943	-0,453
SHORT STRANGLE	BSM	VIX	130	2%	0,208	0,030	0,072	2,095	0,069	0,002	0,002	-0,526	-0,222
SHORT STRANGLE	BSM	VIX	130	5%	1,075	0,008	0,016	0,774	1,392	0,933	12,963	-0,126	-0,035
SHORT STRANGLE	BSM	VIX	130	10%	0,443	0,004	0,008	0,766	1,098	0,635	3,672	-0,039	-0,005
SHORT STRADDLE	BSM	VIX	SINGLE	0%	0,941	0,069	0,164	2,083	0,137	0,008	0,036	-1,257	-0,548
SHORT STRANGLE	BSM	VIX	SINGLE	2%	-0,132	0,043	0,077	2,976	-0,031	-0,001	0,000	-0,705	-0,286
SHORT STRANGLE	BSM	VIX	SINGLE	5%	1,471	0,010	0,017	0,512	1,449	1,223	35,163	-0,146	-0,042
SHORT STRANGLE	BSM	VIX	SINGLE	10%	0,521	0,005	0,007	0,690	1,147	0,852	6,424	-0,040	-0,005
SHORT STRADDLE	VG	DELTA	30	0%	-0,613	0,114	0,249	5,960	-0,054	-0,001	-0,001	-2,021	-0,892
SHORT STRANGLE	VG	DELTA	30	2%	4,328	0,255	0,433	2,448	0,169	0,017	0,299	-4,459	-2,240
SHORT STRANGLE	VG	DELTA	30	5%	4,751	0,165	0,209	1,651	0,288	0,065	1,882	-1,915	-0,517
SHORT STRANGLE	VG	DELTA	30	10%	5,645	0,167	0,230	3,730	0,338	0,083	1,256	-0,873	-0,254
SHORT STRADDLE	VG	DELTA	130	0%	-5,747	0,151	0,417	5,952	-0,381	-0,052	-0,507	-2,731	-1,303
SHORT STRANGLE	VG	DELTA	130	2%	7,149	0,250	0,436	2,353	0,286	0,047	1,424	-4,404	-2,242
SHORT STRANGLE	VG	DELTA	130	5%	5,417	0,185	0,228	1,651	0,293	0,070	2,285	-2,036	-0,512
SHORT STRANGLE	VG	DELTA	130	10%	6,689	0,101	0,127	0,361	0,660	0,347	64,206	-0,397	-0,016
SHORT STRADDLE	VG	DELTA	SINGLE	0%	-3,061	0,178	0,454	5,952	-0,172	-0,012	-0,060	-3,167	-1,529
SHORT STRANGLE	VG	DELTA	SINGLE	2%	5,415	0,254	0,459	2,492	0,213	0,025	0,547	-4,503	-2,232
SHORT STRANGLE	VG	DELTA	SINGLE	5%	9,065	0,196	0,230	1,214	0,463	0,182	13,591	-1,903	-0,419
SHORT STRANGLE	VG	DELTA	SINGLE	10%	5,449	0,194	0,268	2,488	0,280	0,057	1,248	-0,954	-0,216
SHORT STRADDLE	VG	VIX	30	0%	1,150	0,063	0,170	2,365	0,181	0,012	0,060	-1,126	-0,521
SHORT STRANGLE	VG	VIX	30	2%	0,373	0,033	0,085	2,266	0,114	0,005	0,008	-0,587	-0,311
SHORT STRANGLE	VG	VIX	30	5%	0,096	0,014	0,030	2,762	0,067	0,002	0,001	-0,224	-0,127
SHORT STRANGLE	VG	VIX	30	10%	-0,868	0,012	0,065	4,980	-0,747	-0,099	-0,173	-0,183	-0,113
SHORT STRADDLE	VG	VIX	130	0%	3,638	0,077	0,149	2,290	0,473	0,115	1,830	-1,349	-0,725
SHORT STRANGLE	VG	VIX	130	2%	1,345	0,038	0,101	2,163	0,358	0,048	0,296	-0,688	-0,357
SHORT STRANGLE	VG	VIX	130	5%	0,552	0,016	0,027	1,508	0,347	0,072	0,264	-0,244	-0,131
SHORT STRANGLE	VG	VIX	130	10%	0,443	0,004	0,008	0,766	1,098	0,635	3,672	-0,039	-0,005
SHORT STRADDLE	VG	VIX	SINGLE	0%	4,866	0,088	0,174	1,873	0,550	0,154	4,002	-1,571	-0,780
SHORT STRANGLE	VG	VIX	SINGLE	2%	2,367	0,043	0,091	1,762	0,550	0,143	1,920	-0,762	-0,399
SHORT STRANGLE	VG	VIX	SINGLE	5%	1,010	0,017	0,021	0,790	0,609	0,289	3,700	-0,252	-0,127
SHORT STRANGLE	VG	VIX	SINGLE	10%	-0,396	0,012	0,051	4,571	-0,336	-0,026	-0,023	-0,178	-0,121

Note: The best (i.e. highest or lowest) result in each column is bolded. All strategies with VIX sizing were backtested with risk-factor parameter $\rho = 1.4$. *NAKED* stands for strategies without hedging at all, i.e. only taking short positions in options. *SINGLE* reheding stands for hedging the portfolio only once a day.

and practitioners may consider implementing these strategies to achieve stable returns while managing market risk effectively.

Looking forward, future research could delve deeper into optimizing rehedge intervals and exploring alternative hedging models to further refine risk-adjusted returns in option trading strategies.

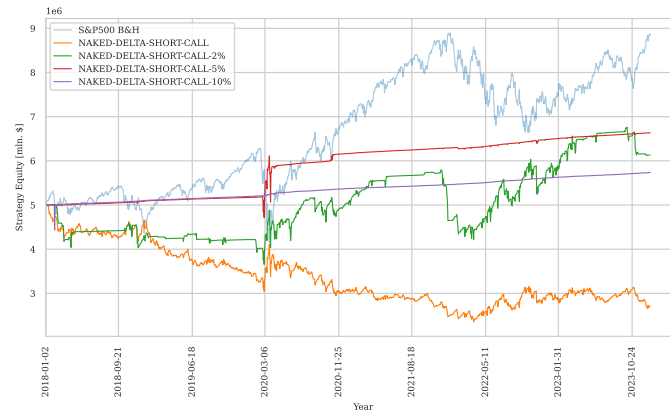
References

- Izidin El Kalak, Alcino Azevedo, and Robert Hudson. Reviewing the hedge funds literature II: Hedge funds' returns and risk management characteristics. *International Review of Financial Analysis*, 48(C):55–66, 2016. URL <https://ideas.repec.org//a/eee/finana/v48y2016icp55-66.html>.
- Fischer Black and Myron Scholes. The Pricing of Options and Corporate Liabilities. *Journal of Political Economy*, 81(3):637–54, 1973. URL https://econpapers.repec.org/article/ucpjpolec/v_3a81_3ay_3a1973_3ai_3a3_3ap_3a637-54.htm.
- Robert Merton. The Theory of Rational Option Pricing. *Bell J Econ Manage Sci*, 4:141–183, March 1973. ISSN 978-981-256-374-3. doi: 10.1142/9789812701022_0008.
- Dilip B. Madan, Peter Carr, and Eric C. Chang. The Variance Gamma Process and Option Pricing. *Review of Finance*, 2(1):79–105, 1998. ISSN 1572-3097. URL https://econpapers.repec.org/article/ouprevfin/v_3a2_3ay_3a1998_3ai_3a1_3ap_3a79-105..htm.
- Chao Gao, Yuhang Xing, and Xiaoyan Zhang. Anticipating Uncertainty: Straddles Around Earnings Announcements, November 2017. URL <https://papers.ssrn.com/abstract=2204549>.
- Hui Hong, Hao-Chang Sung, and Jingjing Yang. On profitability of volatility trading on S&P 500 equity index options: The role of trading frictions. *International Review of Economics & Finance*, 55:295–307, May 2018. ISSN 1059-0560. doi: 10.1016/j.iref.2017.07.012. URL <https://www.sciencedirect.com/science/article/pii/S1059056017305191>.
- S. P. Shivaprasad, Geetha E., Raghavendra, Kishore L., and Rajeev Matha. Choosing the right options trading strategy: Risk-return Trade-off and Performance in Different Market Conditions. *Investment Management and Financial Innovations*, 19:37–50, April 2022. doi: 10.21511/imfi.19(2).2022.04.
- Ahmet K. Karagozoglu. Option Pricing Models: From Black-Scholes-Merton to Present. *The Journal of Derivatives*, March 2022. ISSN 1074-1240, 2168-8524. doi: 10.3905/jod.2022.1.158. URL <https://www.pm-research.com/content/iijderiv/early/2022/03/25/jod.2022.1.158>.
- Charles J. Corrado and Tie Su. Skewness and kurtosis in s&p 500 index returns implied by option prices. *Journal of Financial Research*, 19(2):175–192, 1996.
- K. Lam, E. Chang, and M. C. Lee. An empirical test of the variance gamma option pricing model. *Pacific-Basin Finance Journal*, 10(3):267–285, June 2002. ISSN 0927-538X. doi: 10.1016/S0927-538X(02)00047-1. URL <https://www.sciencedirect.com/science/article/pii/S0927538X02000471>.
- Elton A. Daal and Dilip B. Madan. An Empirical Examination of the Variance-Gamma Model for Foreign Currency Options. *The Journal of Business*, 78(6):2121–2152, 2005. ISSN 0021-9398. doi: 10.1086/497039. URL <https://www.jstor.org/stable/10.1086/497039>.
- Chuan-Hsiang Han, Chien-Hung Chang, Chii-Shyan Kuo, and Shih-Ti Yu. Robust hedging performance and volatility risk in option markets: Application to Standard and Poor's 500 and Taiwan index options. *International Review of Economics & Finance*, 40:160–173, November 2015. ISSN 1059-0560. doi: 10.1016/j.iref.2015.02.009. URL <https://www.sciencedirect.com/science/article/pii/S1059056015000313>.

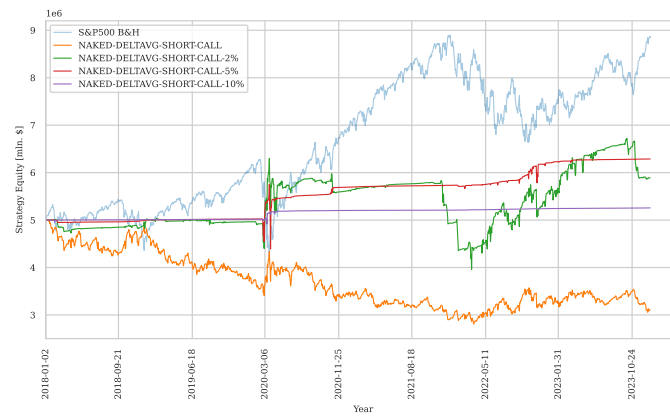
- J.S. Chaput and Louis Ederington. Option spread and combination trading. *Journal of Derivatives*, 10:70–88, July 2003. doi: 10.3905/jod.2003.319207.
- Joanne M. Hill, Venkatesh Balasubramanian, Krag (Buzz) Gregory, and Ingrid Tierens. Finding Alpha via Covered Index Writing. *Financial Analysts Journal*, 62(5):29–46, September 2006. ISSN 0015-198X, 1938-3312. doi: 10.2469/faj.v62.n5.4281. URL <https://www.tandfonline.com/doi/full/10.2469/faj.v62.n5.4281>.
- Konstantinos Nikolopoulos, Konstantinos Maris, Konstantinos Giannelos, and Vassilis Assimakopoulos. Options trading driven by volatility directional accuracy. *Applied Economics*, 39: 253–260, February 2007. doi: 10.1080/00036840500427999.
- Keith Black and Edward Szado. 35-Year Performance Analysis of Cboe S&P 500 Option-Selling Indices. In *The Journal of Beta Investment Strategies*, volume 13, pages 48–65, August 2022. doi: 10.3905/jbis.2022.1.013. URL <http://pm-research.com/lookup/doi/10.3905/jbis.2022.1.013>.
- Carol Alexander and Arben Imeraj. Delta hedging bitcoin options with a smile. *Quantitative Finance*, 23(5):799–817, 2023.
- Kun Xia, Xuwei Yang, and Peng Zhu. Delta hedging and volatility-price elasticity: A two-step approach. *Journal of Banking Finance*, 153:106898, 2023. ISSN 0378-4266. doi: <https://doi.org/10.1016/j.jbankfin.2023.106898>. URL <https://www.sciencedirect.com/science/article/pii/S0378426623001176>.
- Sharif Mozumder, Michael Dempsey, M. Humayun Kabir, and Taufiq Choudhry. An improved framework for approximating option prices with application to option portfolio hedging. *Economic Modelling*, 59:285–296, 2016. ISSN 0264-9993. doi: <https://doi.org/10.1016/j.econmod.2016.07.023>. URL <https://www.sciencedirect.com/science/article/pii/S0264999316302218>.
- Oskari Mikkilä and Juho Kanninen. Empirical deep hedging. *Quantitative Finance*, 23(1):111–122, 2023. doi: 10.1080/14697688.2022.2136037. URL <https://doi.org/10.1080/14697688.2022.2136037>.
- Benjamin Anderegg, Florian Ulmann, and Didier Sornette. The impact of option hedging on the spot market volatility. *Journal of International Money and Finance*, 124:102627, 2022. ISSN 0261-5606. doi: <https://doi.org/10.1016/j.jimonfin.2022.102627>. URL <https://www.sciencedirect.com/science/article/pii/S0261560622000304>.
- John Hull and Alan White. Optimal delta hedging for options. *Journal of Banking Finance*, 82:180–190, 2017. ISSN 0378-4266. doi: <https://doi.org/10.1016/j.jbankfin.2017.05.006>. URL <https://www.sciencedirect.com/science/article/pii/S0378426617301085>.
- Edoardo Vittori, Michele Trapletti, and Marcello Restelli. Option hedging with risk averse reinforcement learning. In *Proceedings of the First ACM International Conference on AI in Finance*, ICAIF '20, New York, NY, USA, 2021. Association for Computing Machinery. ISBN 9781450375849. doi: 10.1145/3383455.3422532. URL <https://doi.org/10.1145/3383455.3422532>.
- Justin Kirkby. Efficient Option Pricing by Frame Duality with the Fast Fourier Transform. *SIAM Journal on Financial Mathematics*, 6:713–747, August 2015. doi: 10.1137/140989480.

A Equity Plots of Naked Strategies

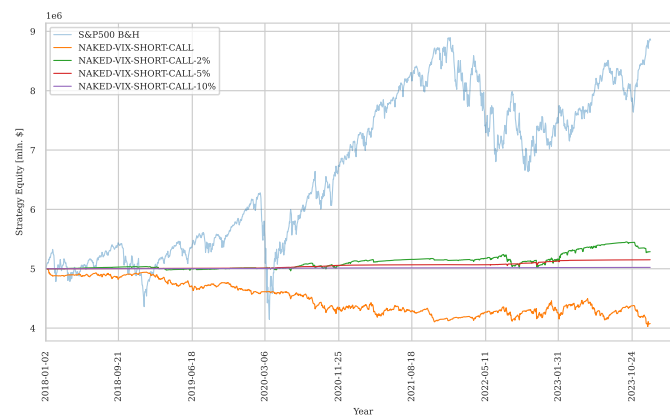
A.1 Short Calls



(a) Naked Short Calls with BSM Delta Sizing



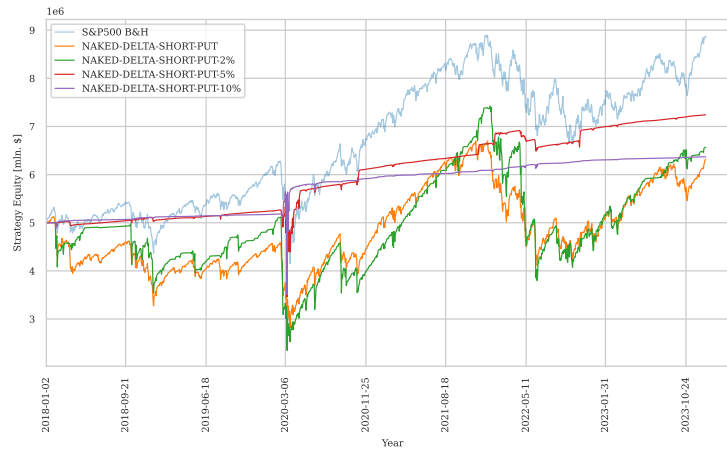
(b) Naked Short Calls with VG Delta Sizing



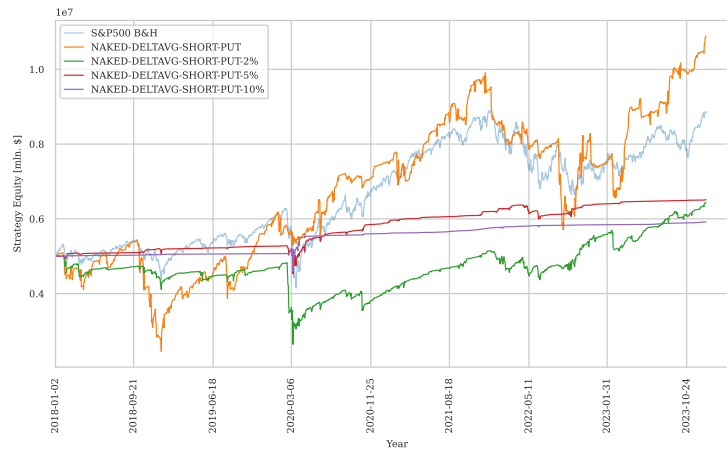
(c) Naked Short Calls with VIX Sizing

Figure 2: Naked Short Call Strategies Equity Lines Comparison

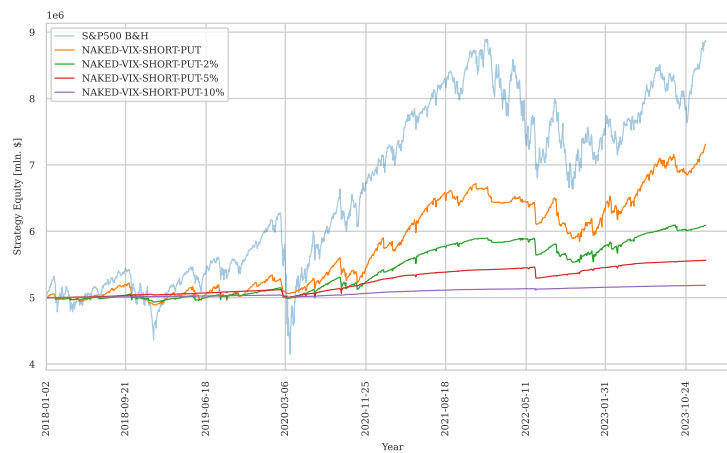
A.2 Short Puts



(a) Naked Short Puts with BSM Delta Sizing



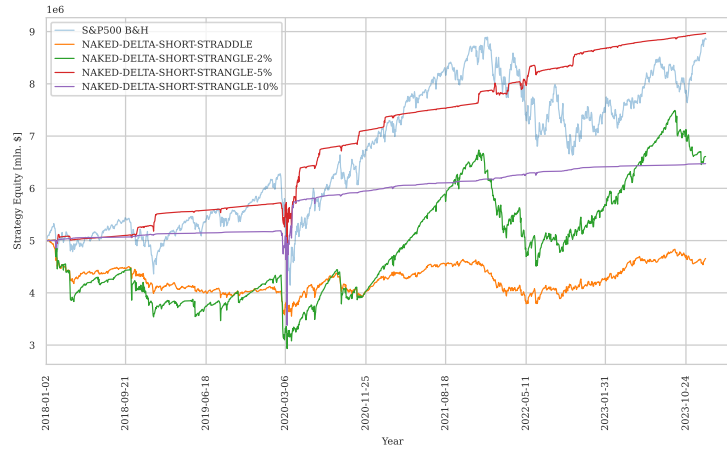
(b) Naked Short Puts with VG Delta Sizing



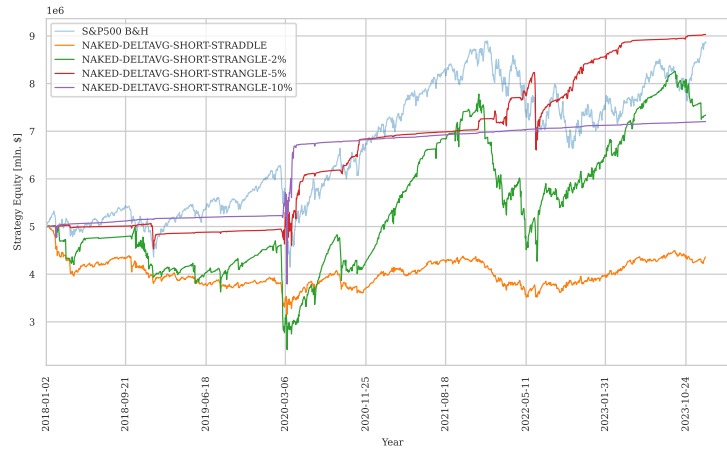
(c) Naked Short Puts with VIX Sizing

Figure 3: Naked Short Put Strategies Equity Lines Comparison

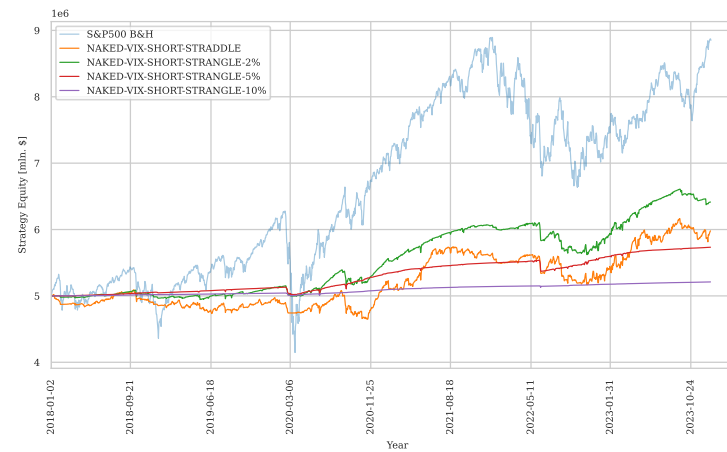
A.3 Short Strangles



(a) Naked Short Strangles with BSM Delta Sizing



(b) Naked Short Strangles with VG Delta Sizing

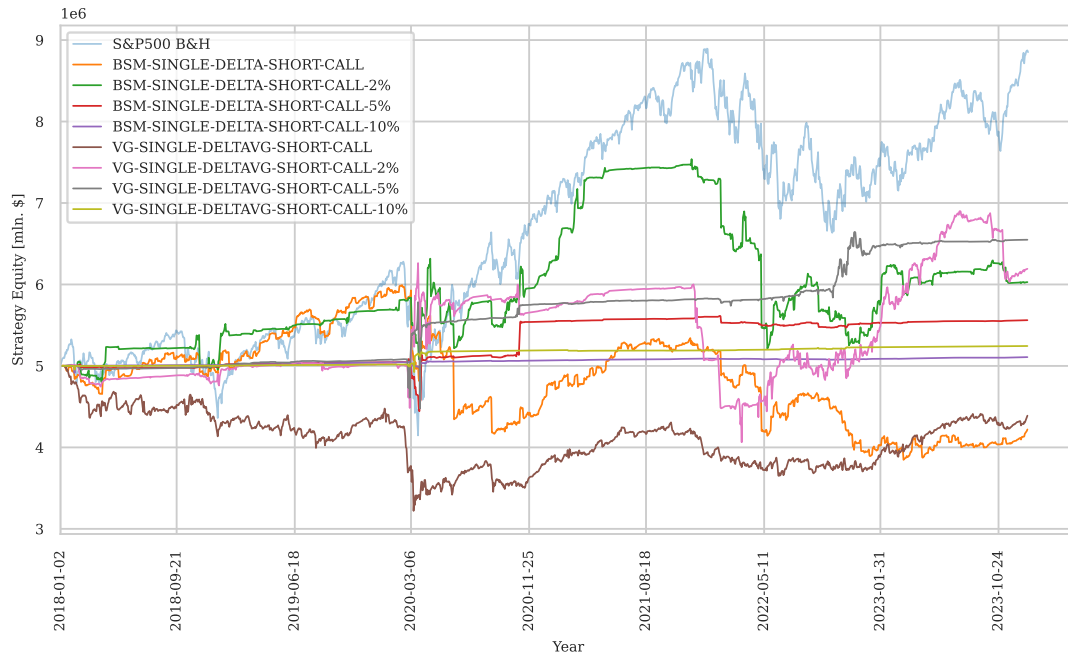


(c) Naked Short Strangles with VIX Sizing

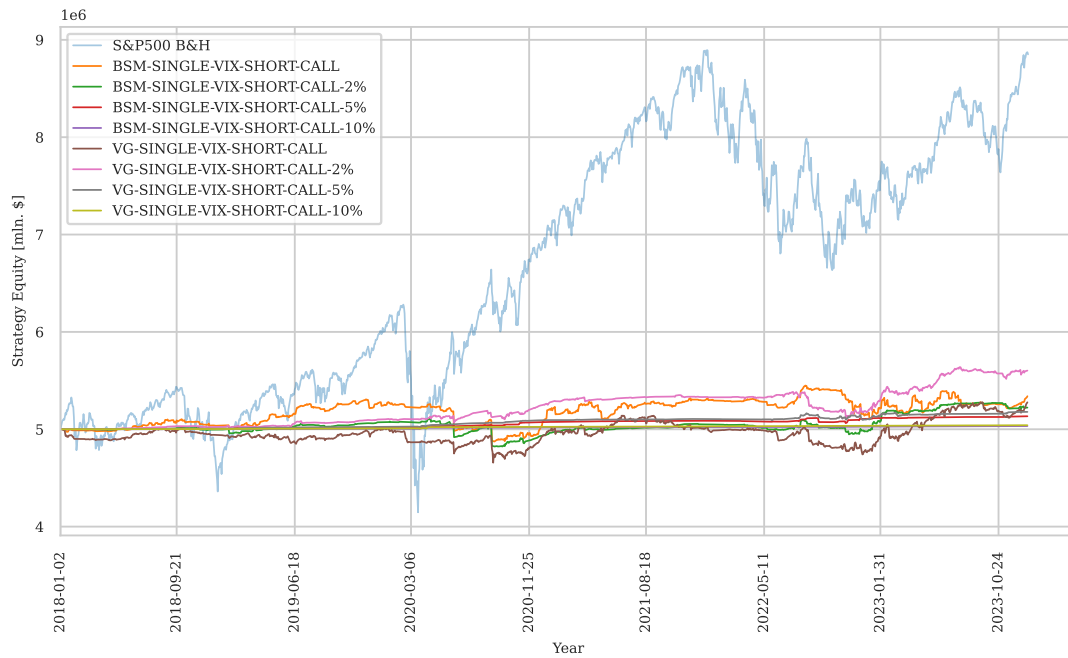
Figure 4: Naked Short Strangle Strategies Equity Lines Comparison

B Equity Plots of Strategies with Daily Hedging

B.1 Short Calls



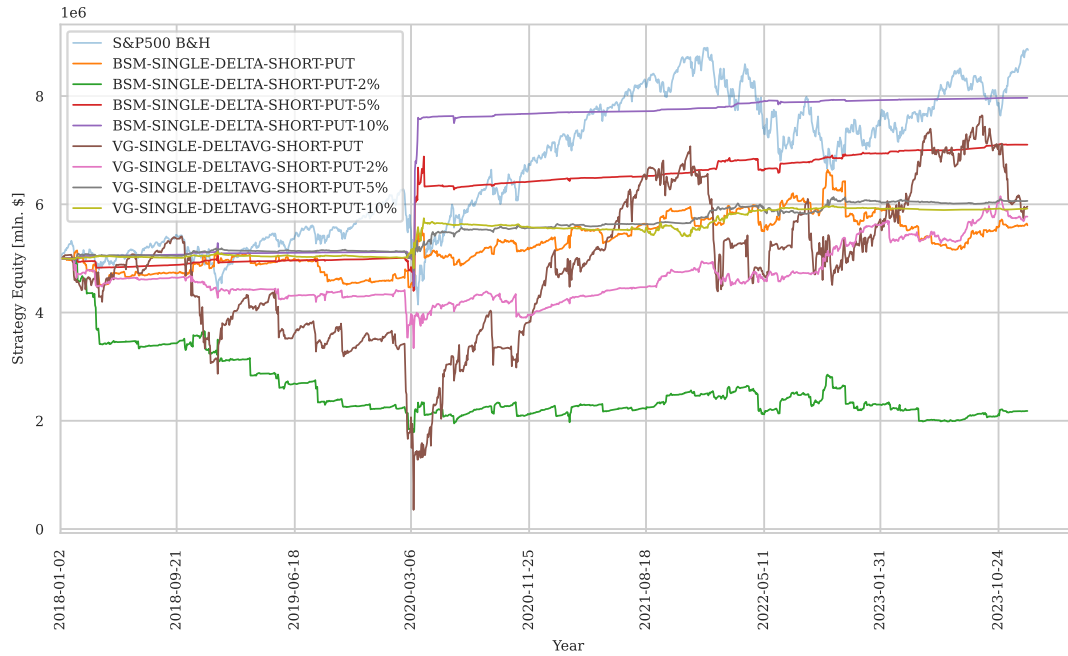
(a) Daily Hedged Short Calls with Delta Sizing



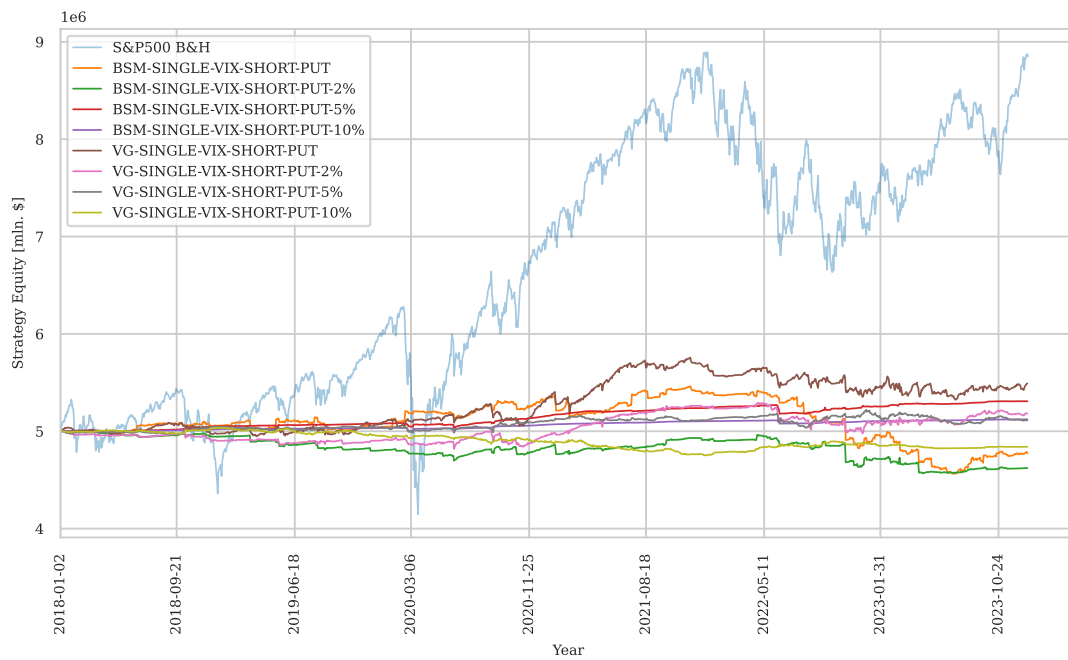
(b) Daily Hedged Short Calls with VIX Sizing

Figure 5: Daily Hedged Short Call Strategies Equity Lines Comparison

B.2 Short Puts



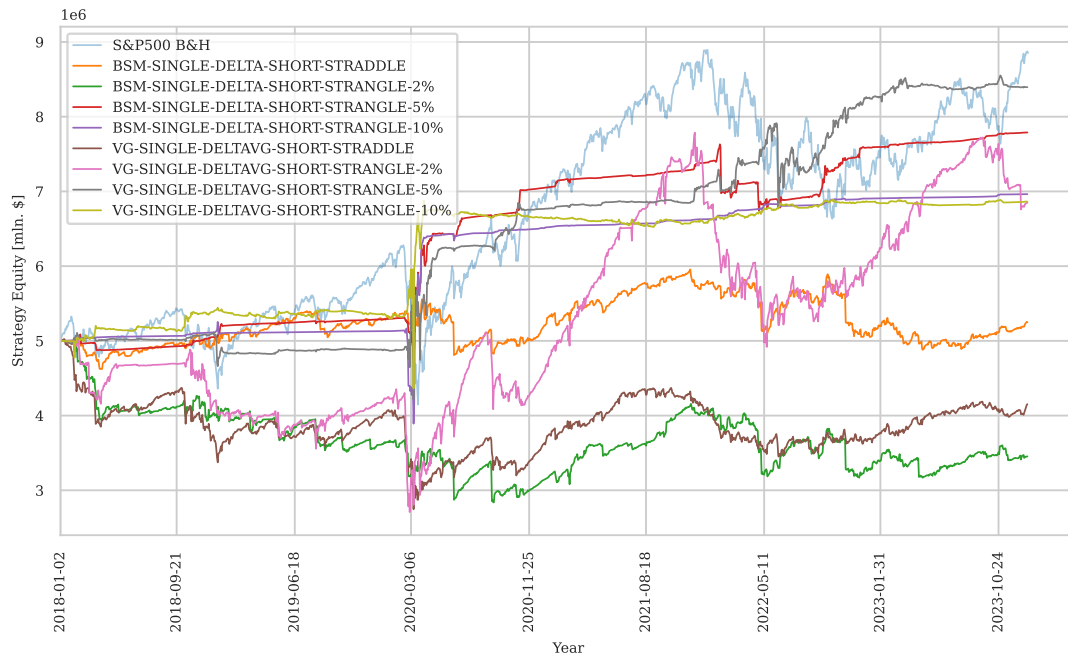
(a) Daily Hedged Short Puts with Delta Sizing



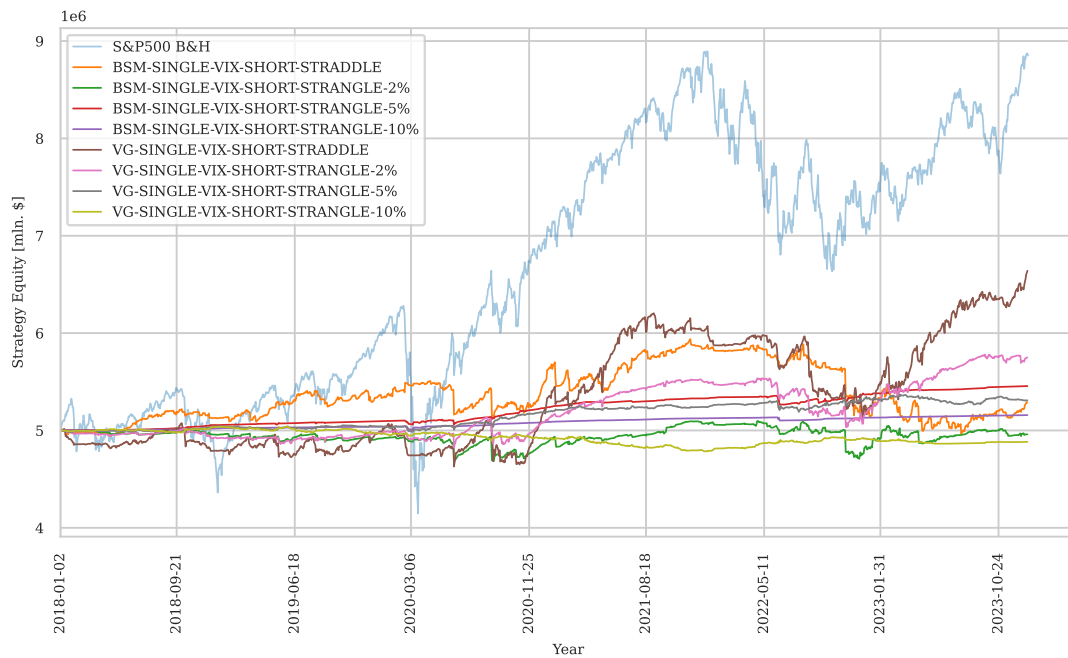
(b) Daily Hedged Short Puts with VIX Sizing

Figure 6: Daily Hedged Short Put Strategies Equity Lines Comparison

B.3 Short Strangles



(a) Daily Hedged Short Strangles with Delta Sizing



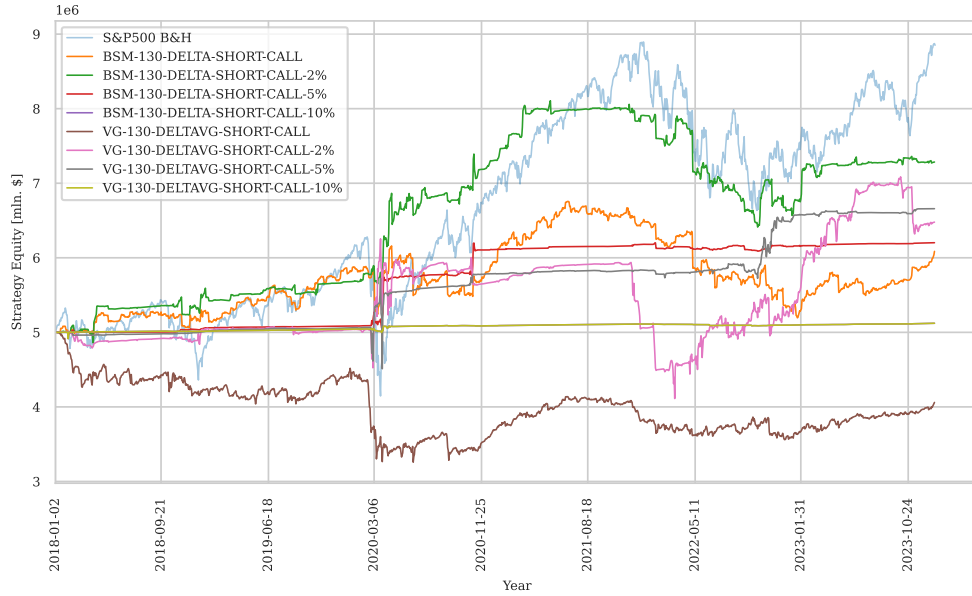
(b) Daily Hedged Short Strangles with VIX Sizing

Figure 7: Daily Hedged Short Strangle Strategies Equity Lines Comparison

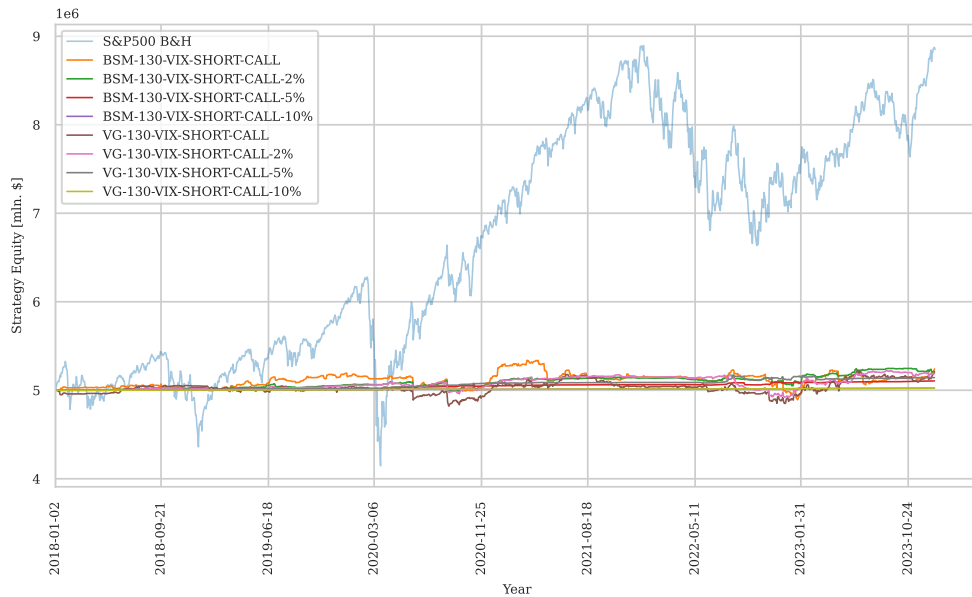
C Equity Plots of Strategies with Intraday Hedging

C.1 Short Calls

C.1.1 Hedging Every 130 Minutes



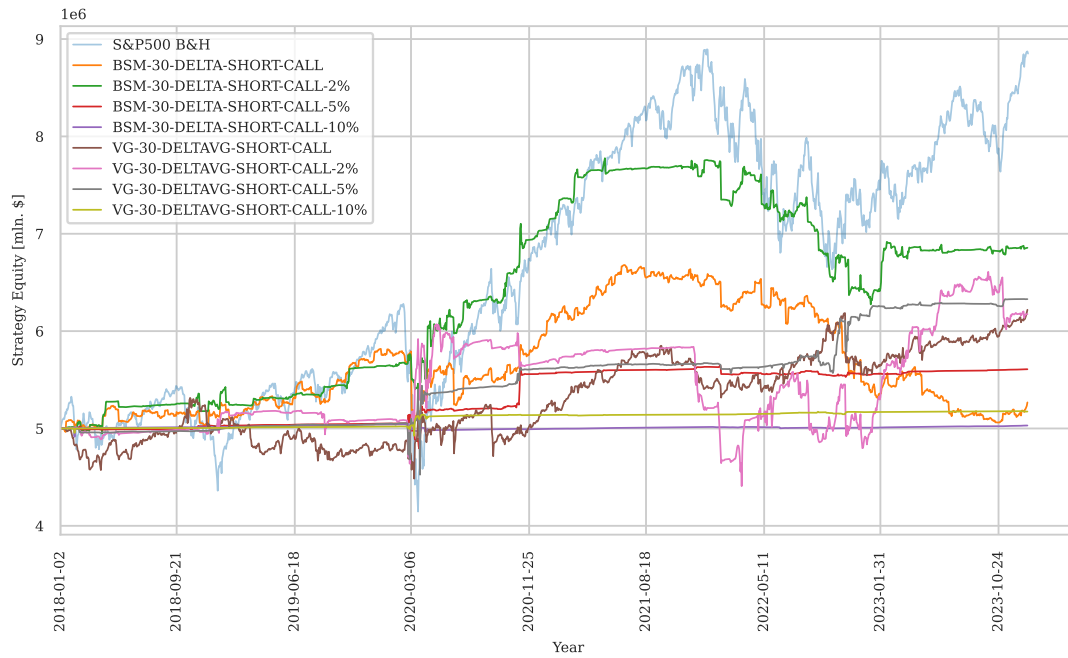
(a) Short Calls with Delta Sizing Hedged Every 130 Minutes



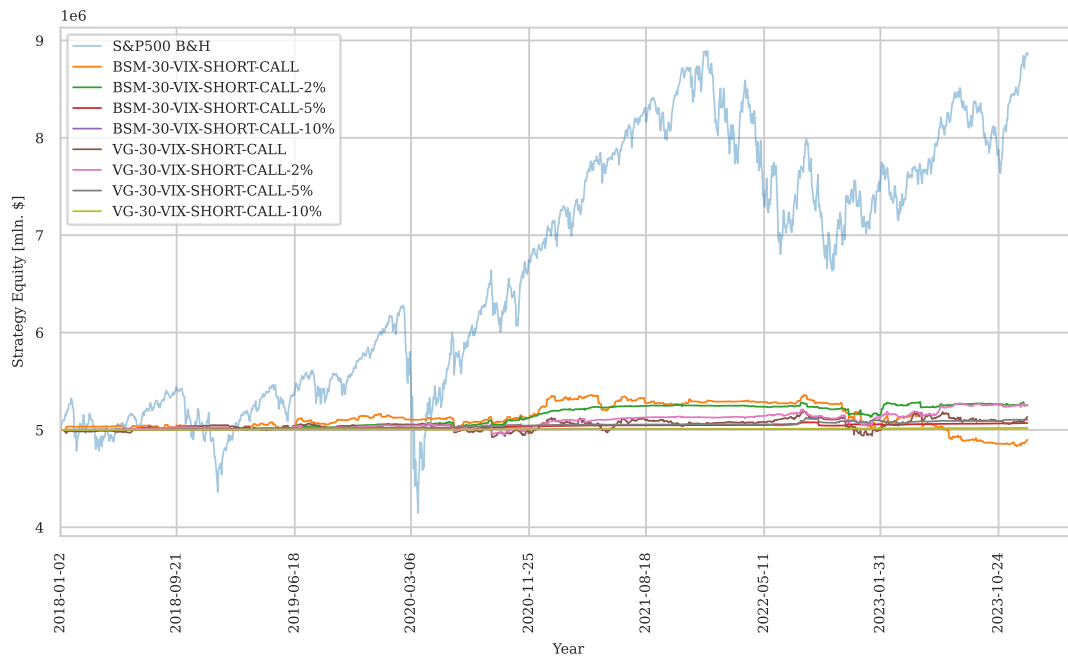
(b) Short Calls with VIX Sizing Hedged Every 130 Minutes

Figure 8: Intraday Hedged (130 Minutes) Short Call Strategies Equity Lines Comparison

C.1.2 Hedging Every 30 Minutes



(a) Short Calls with Delta Sizing Hedged Every 30 Minutes

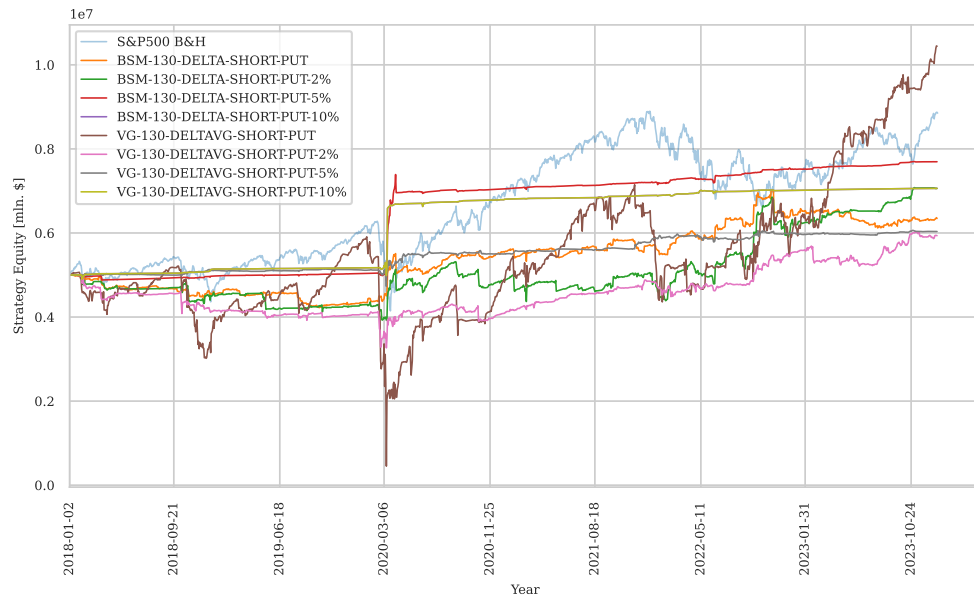


(b) Short Calls with VIX Sizing Hedged Every 30 Minutes

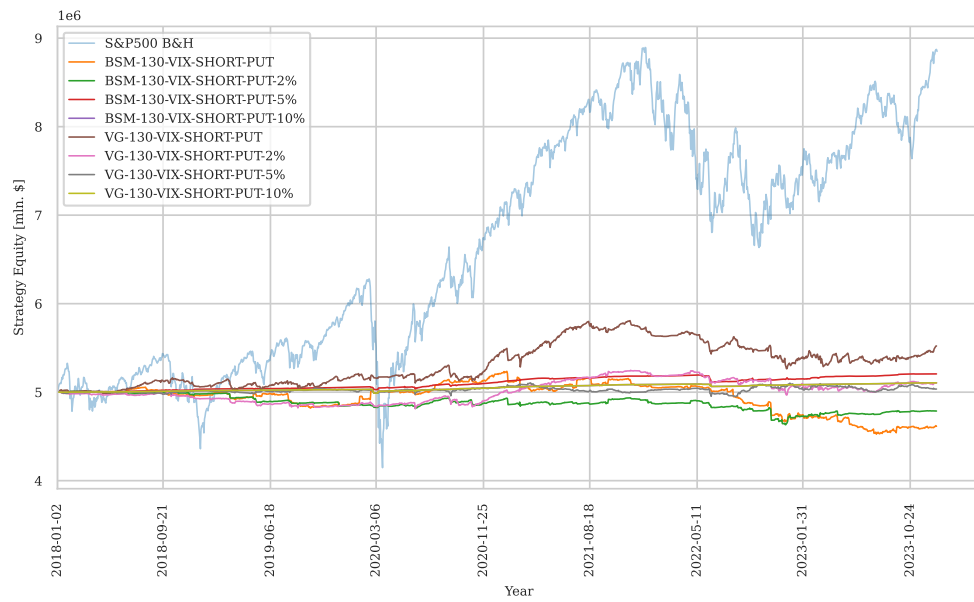
Figure 9: Intraday Hedged (30 Minutes) Short Call Strategies Equity Lines Comparison

C.2 Short Puts

C.2.1 Hedging Every 130 Minutes



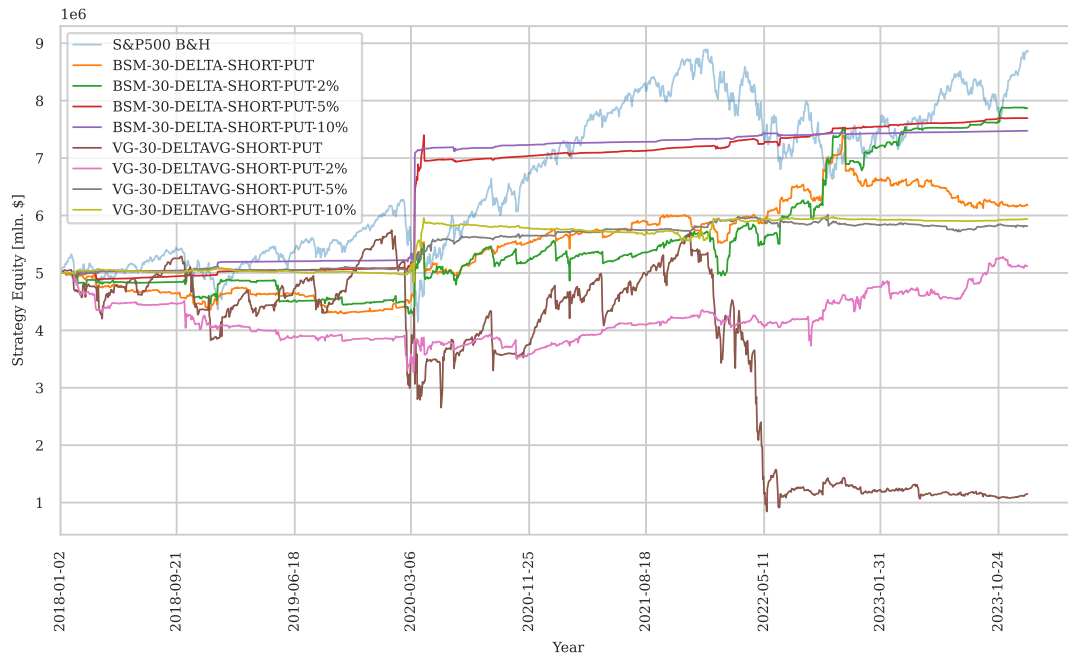
(a) Short Puts with Delta Sizing Hedged Every 130 Minutes



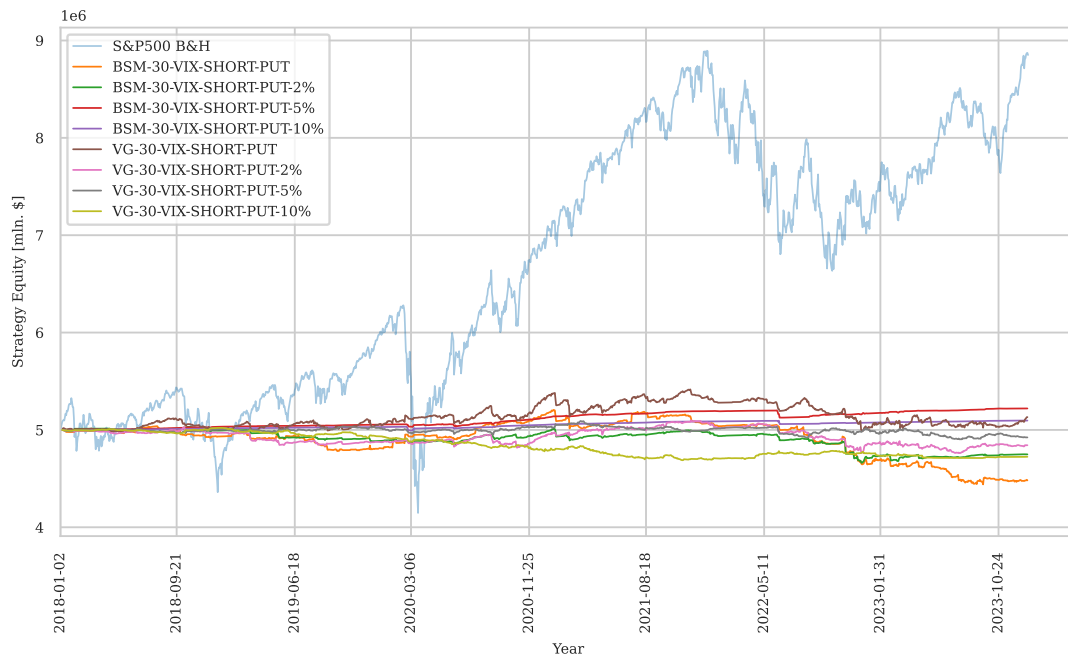
(b) Short Puts with VIX Sizing Hedged Every 130 Minutes

Figure 10: Intraday Hedged (130 Minutes) Short Put Strategies Equity Lines Comparison

C.2.2 Hedging Every 30 Minutes



(a) Short Puts with Delta Sizing Hedged Every 30 Minutes

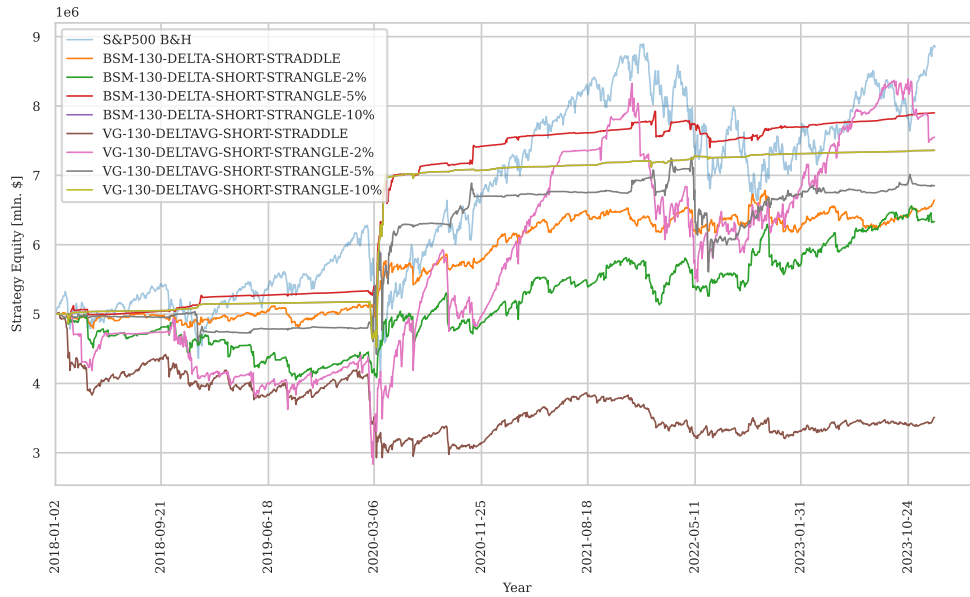


(b) Short Puts with VIX Sizing Hedged Every 30 Minutes

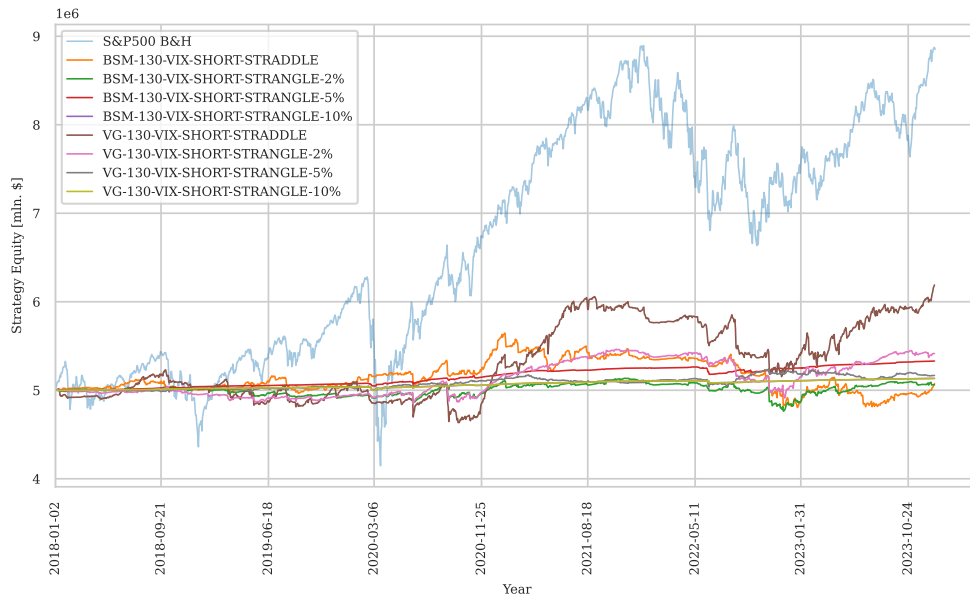
Figure 11: Intraday Hedged (30 Minutes) Short Put Strategies Equity Lines Comparison

C.3 Short Strangles

C.3.1 Hedging Every 130 Minutes



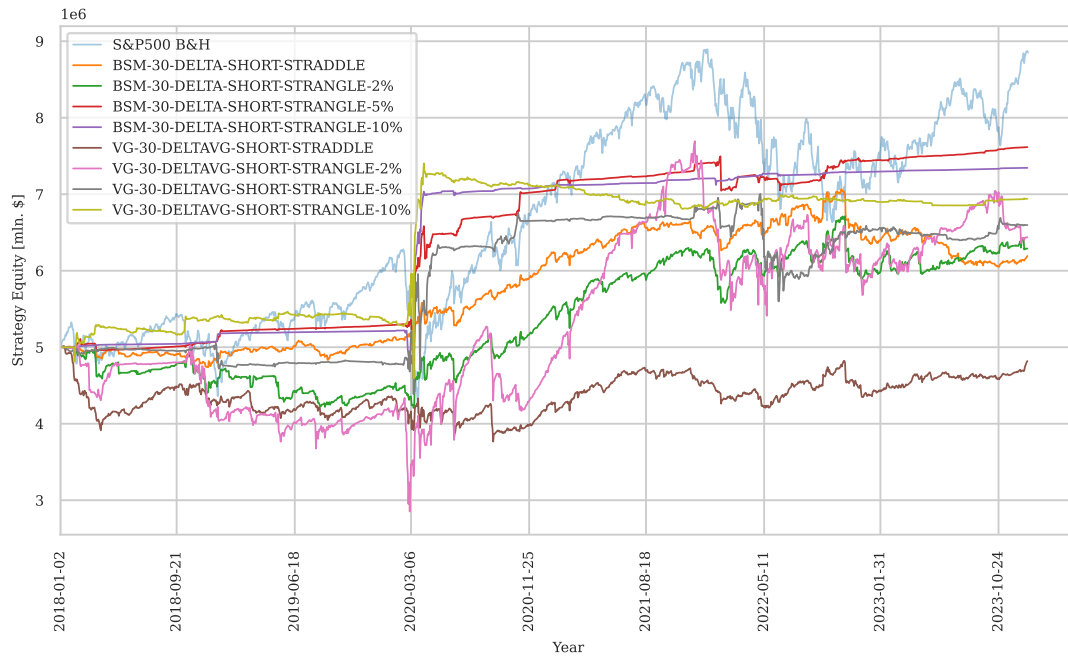
(a) Short Strangles with Delta Sizing Hedged Every 130 Minutes



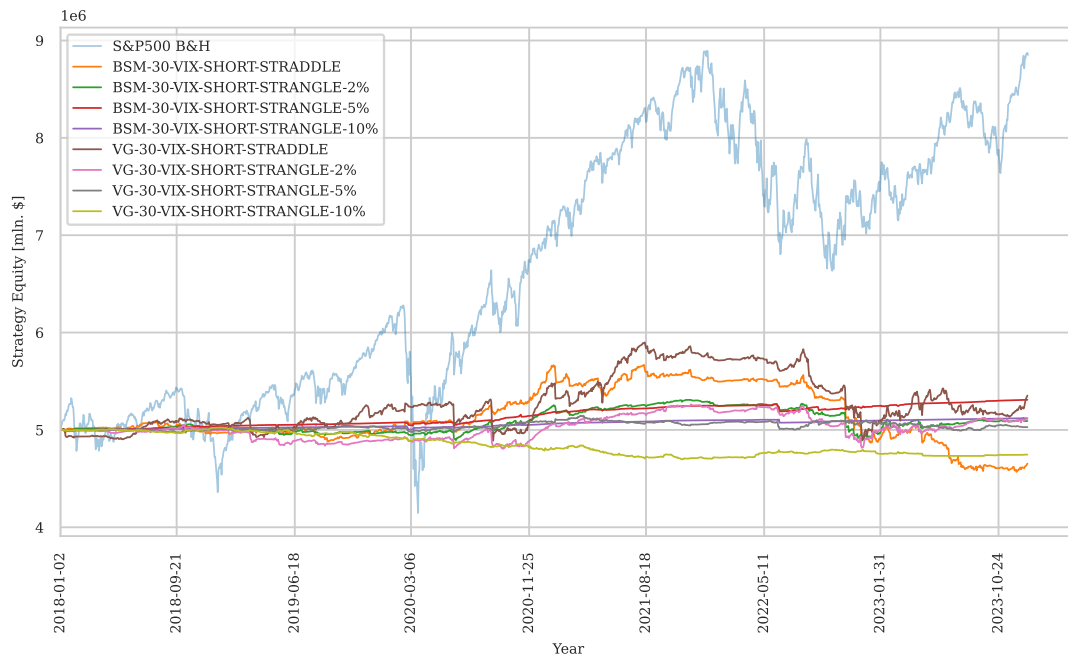
(b) Short Strangles with VIX Sizing Hedged Every 130 Minutes

Figure 12: Intraday Hedged (130 Minutes) Short Strangle Strategies Equity Lines Comparison

C.3.2 Hedging Every 30 Minutes



(a) Short Strangles with Delta Sizing Hedged Every 30 Minutes



(b) Short Strangles with VIX Sizing Hedged Every 30 Minutes

Figure 13: Intraday Hedged (30 Minutes) Short Strangle Strategies Equity Lines Comparison



UNIVERSITY OF WARSAW
FACULTY OF ECONOMIC SCIENCES
44/50 DŁUGA ST.
00-241 WARSAW
WWW.WNE.UW.EDU.PL
ISSN 2957-0506